



Allergic aspergillosis of the respiratory tract

Ashok Shah¹ and Chandramani Panjabi²

Affiliations: ¹Dept of Respiratory Medicine, Vallabhbhai Patel Chest Institute, University of Delhi, New Delhi, and ²Dept of Respiratory Medicine, Mata Chanan Devi Hospital, New Delhi, India.

Correspondence: A. Shah, Dept of Respiratory Medicine, Vallabhbhai Patel Chest Institute, University of Delhi, Delhi 110 007, P.O. Box 2101, India. E-mail: ashokshah99@yahoo.com



@ERSpublications

Aspergillus sensitive asthmatics must be investigated for ABPA and allergic *Aspergillus* sinusitis
<http://ow.ly/rCC2e>

Aspergillus, a genus of spore forming fungi found worldwide, affects the respiratory tract in many ways [1, 2]. The spores of this ubiquitous mould are dispersed by wind in the atmosphere and inhalation is the primary route of access in almost all forms of aspergillosis. The spectrum of *Aspergillus*-associated respiratory disorders comprises three well defined clinical categories (table 1): allergic manifestations, saprophytic colonisation of the respiratory tract and invasive disseminated disease [1]. Amongst the allergic aspergillosis disorders, allergic bronchopulmonary aspergillosis (ABPA) is the most recognised form. Since it was first described in England, UK, in 1952 [3], it has been documented around the world [4]. Although ABPA and allergic *Aspergillus* sinusitis (AAS) are mostly encountered in atopic individuals, hypersensitivity pneumonitis can occur in the nonatopic population.

Aspergillus-induced asthma

Aspergillus-induced asthma (AIA) is a classical immediate (type I) IgE-mediated hypersensitivity reaction to *Aspergillus* antigens that presents clinically as asthma. The frequency of *Aspergillus* sensitisation in asthmatic subjects varies from 16% to 38% in different geographical regions [5–8]. In a trans-Atlantic comparison study, type I skin reactivity to *Aspergillus* antigens was elicited in 28% of asthmatic patients from Cleveland (OH, USA) and 23% from London, UK [7]. The authors were surprised at finding a direct correlation between *Aspergillus* skin-test positivity and severity of airflow obstruction. In a series of 105 patients with bronchial asthma, 30 (28.5%) were sensitised to *Aspergillus* antigens [8]. This group of 30 patients with AIA had a more severe form of asthma when compared to those with skin test positivity to antigens other than *Aspergillus*. This was evidenced by a statistically significant higher mean duration of illness ($p < 0.001$), mean eosinophil count ($p < 0.0001$), mean total IgE ($p < 0.05$) and more usage of oral corticosteroids per year ($p < 0.004$). Thus, it is imperative to assess for *Aspergillus* sensitisation in patients with asthma. Recently, various studies have found increasing severity of airways obstruction, as well as an increased incidence of bronchiectasis in patients with AIA [9–12].

Severe asthma with fungal sensitisation

It is now well established that sensitisation to various fungi predisposes to an increased severity of bronchial asthma [13, 14]. In a multicentre European Community Respiratory Health Survey trial [13] amongst 1132 adults with asthma, the risk for developing severe asthma was higher in those sensitised to *Alternaria alternata* and/or *Cladosporium herbarum*. In the subset of the population with severe asthma, the prevalence

Received: Sept 24 2013 | Accepted after revision: Dec 04 2013

Conflict of interest: None declared.

Provenance: Submitted article, peer reviewed.

Copyright ©ERS 2014. ERR articles are open access and distributed under the terms of the Creative Commons Attribution Non-Commercial Licence 3.0.

TABLE 1 *Aspergillus*-associated respiratory disorders

Allergic aspergillosis
(IgE-mediated) <i>Aspergillus</i> -induced asthma
Allergic bronchopulmonary aspergillosis
Allergic <i>Aspergillus</i> sinusitis
Hypersensitivity pneumonitis
Saprophytic colonisation
Aspergilloma
Simple
Complex (chronic cavitary pulmonary aspergillosis)
Sinus fungal balls
Invasive disease
Invasive pulmonary aspergillosis
Acute
Subacute (chronic necrotising pulmonary aspergillosis)
Acute fulminant invasive sinusitis
Chronic invasive sinusitis
Granulomatous invasive sinusitis

Information from [1, 2].

of fungal sensitisation was much higher and ranged up to 75% in those requiring multiple hospitalisations. Since this could have clinico-therapeutic implications, a separate entity called severe asthma with fungal sensitisation (SAFS) was described [15].

The diagnostic criteria for SAFS include: 1) severe (poorly controlled) asthma; 2) a positive skin-prick test result for fungi (but not necessarily to *Aspergillus* species) or *in vitro* demonstration of antifungal IgE of at least $0.4 \text{ kU}\cdot\text{L}^{-1}$; and 3) a total serum IgE concentration $<1000 \text{ kU}\cdot\text{L}^{-1}$ [15]. Although cutaneous positivity to one or more fungi is elicited in patients with SAFS, bronchiectasis and mucoid impaction are generally absent and serum precipitins to *Aspergillus* are negative. There appears to be a promising role for antifungal agents in these patients [16, 17]. Statistically significant better asthma quality of life scores were noted in a randomised controlled trial when itraconazole 200 mg twice daily was prescribed for 32 weeks in patients with SAFS [16].

It is also important to distinguish between SAFS and ABPA [15]. It appears that SAFS may be a completely different entity as ABPA can also occur in mild or moderate asthmatics. In a recent perspective, GREENBERGER [18] dwelled on the distinction between SAFS and ABPA. It is still not known how many patients with SAFS will eventually progress to ABPA/allergic bronchopulmonary mycoses (ABPM).

Allergic bronchopulmonary aspergillosis

An immunologically mediated lung disease, ABPA predominantly affects patients with asthma and cystic fibrosis (CF) [19]. Repeated inhalation of *Aspergillus* spores, principally *Aspergillus fumigatus*, leads to airway colonisation in susceptible hosts that elicits an allergic response. Although type I (IgE-mediated) hypersensitivity is common, type III (IgG-mediated immune complex) and type IV (cell-mediated) reactions have also been observed; however, tissue invasion does not occur [20]. The different *Aspergillus* species, which belong to a genus of ubiquitous spore forming fungi, are present in both the indoor and outdoor environment. Exposure to aspergilli from municipal leaf compost heaps [21] and garbage collection sites [22] has led to the development of ABPA. Other areas with high *Aspergillus* load include damp basements, barns and sewage treatment facilities.

Despite ABPA being recognised as a disease that predominantly affects asthmatics more than six decades ago, we have been unable to answer the question of why only a few asthmatics actually suffer from this potentially destructive lung disease. Furthermore, asthma is well known to run in families but familial occurrence of ABPA remains a rarity [23, 24]. Evaluation of 164 patients diagnosed over a period of 22 years at a tertiary referral centre detected familial occurrence in four (4.9%) pairs of first degree relatives. Concomitant AAS was present in one patient each in three out of the four pairs [25]. Even today, ABPA remains a challenge to the pulmonologist as consensus on appropriate standardised diagnostic criteria and management protocols are still emerging.

Immunopathogenesis

As mentioned previously, it remains a mystery as to why only a few patients with asthma develop ABPA. Genetic predisposition may possibly be involved as is suggested by the familial occurrence. Spores of

Aspergillus get trapped in the viscid sputum and colonise the airways of susceptible patients with asthma. After colonisation, the conidia of this thermotolerant species germinate within the airways and form hyphae. This results in secretion of proteolytic enzymes that mediate the release of pro-inflammatory cytokines [26]. A polyclonal antibody response is evoked, leading to elevated total IgE and *Aspergillus*-specific IgE, IgG and IgA antibodies [27]. Increased *in vitro* synthesis of IgE by B-lymphocytes was found in patients with ABPA when compared to patients with AIA [28]. The immunological response is primarily of the cellular T-helper cell (Th)-2 type, as evident by increased interleukin (IL)-4, IL-5, IL-10 and IL-13 production. Thus, the strong humoral and cellular response that is elicited indicates that the patient is immunocompetent and possesses an activated defence system against the offending fungi [29, 30].

Various genetic and host susceptibility factors play a role in determining which *Aspergillus* sensitised patients go on to develop ABPA. Specific antibodies to a cytotoxic ribonuclease antigen (18 kD) and an elastolytic protease antigen (45 kD) were observed in Indian patients with ABPA [31, 32]. Earlier studies found a strong association between human leukocyte antigen (HLA)-DR2/DR5 genotypes and ABPA when compared to patients with asthma but without ABPA [33–35]. A specific HLA-DR2 (DRB1*1503) allele was almost exclusively identified in ABPA while HLA-DQ2 had a protective role [35]. Mutations in the cystic fibrosis transmembrane conductance regulator (CFTR) gene were found in patients with ABPA and CF [36–39]. The CFTR mutations resulted in abnormal mucus properties when the bronchi of such patients were subjected to a heavy load of *Aspergillus* spores and hyphae [40].

Subsequent studies have linked genetic polymorphisms to the heightened Th2 cellular response in ABPA. The role of lung surfactant proteins (SP) A and D in inhibiting the ability of allergic-specific IgE from patients with ABPA was demonstrated [41, 42]. An association between SP-A2 polymorphisms and increased levels of IgE and eosinophils was also found [43, 44]. Two exonic polymorphisms SP-A2 A1660G and SP-A2 G1649C were associated with an increased severity of clinical markers [43]. Single nucleotide polymorphisms of IL-4 receptor- α (IL-4R α) [45] and IL-10 [46, 47] strongly correlated with ABPA. The IL-10 1082GG genotype was significantly higher in subjects with *A. fumigatus* colonisation [46]. Elevated levels of mannan-binding lectin, especially the 1011A allele, are also found in ABPA [48, 49]. Toll-like receptor polymorphisms were also demonstrated in patients with ABPA [50].

A synthetic peptide epitope of Asp f 1, a major antigen of *A. fumigatus*, has been identified for its potential use in skin testing and development of a standardised immunodiagnostic test for aspergillosis [51]. Using the immunoproteomics approach [52], several novel allergens of *A. fumigatus* were identified that would facilitate serodiagnosis and could potentially help in the development of immunotherapy for ABPA.

Epidemiology of ABPA

Although ABPA is a well-established entity, its exact prevalence among asthmatics is yet to be estimated. The lack of a uniform diagnostic criterion and standardised tests has hampered efforts on this score [53]. This is highlighted by the fact that ABPA is still to receive recognition in the international classification of diseases, the ninth revision of which, in 1996, did not include ABPA [54]. In the initial years between 1959 and 1968, when awareness regarding ABPA outside Europe was low, the prevalence of definite ABPA among patients with asthma in England was estimated to be ~8–11% while that of probable ABPA was ~22% [55]. In 1971, researchers from Australia highlighted the difficulty in determining the prevalence of ABPA [56], which was seen in nearly 10% of their 250 asthmatic subjects. After recognition of this entity from the USA in 1968 [57], several studies determined sensitisation to *Aspergillus* antigens in patients with asthma. Between 1983 and 1986, GREENBERGER and PATTERSON [58] evaluated 531 patients with asthma and immediate cutaneous reactivity to *Aspergillus* antigens. A diagnosis of ABPA was made in 32 (6%) patients, 19 (3.6%) with central bronchiectasis and 13 (2.4%) with positive serology only. In subsequent studies [8, 59, 60], ABPA was detected in 25–37% of asthmatics with a positive skin-prick test to *A. fumigatus*. In 105 patients with bronchial asthma [8], a significantly longer duration of illness and earlier age of onset of asthma, as well as rhinitis, higher mean total leukocyte counts, absolute eosinophil counts and total serum IgE values were found in eight patients diagnosed with ABPA. In addition, this group had significantly more patients with severe obstructive airways disease and had significantly more prescriptions for oral corticosteroids.

According to internationally available data, ABPA may be found in up to 6% of all asthmatic patients [61]. In CF, the prevalence of ABPA ranges from 2% to 15% [62]. In an attempt to ascertain the global burden of ABPA, DENNING *et al.* [63] conducted a scoping review by utilising published clinical and population-based studies on asthma and ABPA. Data analyses from five referral cohorts [60, 64–67], which were prospective studies on estimating the frequency of ABPA in at least 50 patients with asthma, revealed that the prevalence of ABPA in adult asthmatics is 2.5% (range 0.72–3.5%). Based on this model, the authors opined that the number of adult patients with ABPA throughout the world could “potentially exceed 4.8 million” [63].

In order to formulate consensus-based guidelines for the diagnosis and treatment of ABPA, in September 2011, the International Society for Human and Animal Mycology (ISHAM) established a working group on ABPA complicating asthma. Compiling published data on *Aspergillus* sensitisation and ABPA since 2000, the ISHAM working group [68] found that the prevalence of *Aspergillus* sensitisation among asthmatics varied between 5.5% and 38.5% [8, 60, 66, 67, 69–72]. During the same period, the prevalence of ABPA in patients with asthma ranged from 2.5% to 22.3% with a pooled prevalence of 8.4% [68]. The working group went on to propose a revised set of diagnostic criteria, which is discussed below [68].

Diagnostic criteria

The major and minor diagnostic criteria for ABPA have evolved over time (table 2) [73, 74]. A set of criteria is required as, apart from demonstration of central bronchiectasis with normal tapering bronchi, there is no single test that establishes the diagnosis or is not affected by therapy with oral prednisolone [75]. The occurrence of central bronchiectasis with normal tapering bronchi in ABPA was first described by SCADDING [76], and is considered to be pathognomonic of the disease. A set of minimal essential criteria has also been advocated by GREENBERGER [19], which includes: 1) asthma, 2) immediate cutaneous reactivity to *A. fumigatus*, 3) total serum IgE $>1000 \text{ ng}\cdot\text{mL}^{-1}$ ($417 \text{ kU}\cdot\text{L}^{-1}$), 4) elevated specific IgE-/IgG-*A. fumigatus*, and 5) central bronchiectasis in the absence of distal bronchiectasis. When central bronchiectasis is not present, the disease entity is termed serological ABPA, which could possibly be an earlier or a milder form of presentation [77]. GREENBERGER [18] has further suggested that minimal essential criteria 1–3 and 5 could possibly be considered as “truly minimal” diagnostic criteria.

Even though the initial criteria were formed three decades ago, the best cut-off values of total IgE and eosinophil count, as well as the specificity of IgG-*A. fumigatus*, for ABPA are not truly known. Moreover, a lack of any consensus on the minimum number of criteria, either major or minor, required to confirm the presence of ABPA still exists. In order to overcome these gaps, the ISHAM working group [68] has proposed revised criteria for the diagnosis of ABPA wherein the items are broadly divided into “obligatory” and “other” criteria (table 2). This newly proposed set of criteria recognises bronchial asthma and CF as predisposing conditions for ABPA. The two features of the obligatory criteria are: 1) positive immediate (type I) cutaneous hypersensitivity to *Aspergillus* antigen or elevated IgE levels against *A. fumigatus*, and 2) elevated total IgE levels $>1000 \text{ IU}\cdot\text{mL}^{-1}$. It is essential that both these findings should be present to achieve a diagnosis of ABPA. At least two out of three other criteria should be fulfilled: 1) the presence of precipitating or IgG antibodies against *A. fumigatus* in serum, 2) radiographic pulmonary opacities consistent with ABPA, and 3) a total eosinophil count $>500 \text{ cells}\cdot\mu\text{L}^{-1}$ in steroid naïve patients. This set of criteria is aimed to help clinicians establish an early diagnosis. However, the working group has suggested that this newly proposed criteria needs “validation and further refinement” [68].

ABPA without asthma

Although asthma is generally the first criterion for diagnosis; on rare occasions, ABPA may occur in subjects without clinical asthma. In 1981, GLANCY *et al.* [78] described the first such patient. Since then approximately a score of patients with ABPA without asthma have been reported [79–83]. On the basis of their clinical and radiological findings, more than half of these patients were initially investigated for bronchogenic carcinoma while one patient was referred for evaluation of multidrug-resistant tuberculosis [82]. This could be attributed to the absence of clinical asthma and the remarkable radiological similarities to pulmonary tuberculosis. A patient with ABPA without asthma but with broncholithiasis was also described from Korea [83].

Clinical features

An indolent disease with a protracted course, ABPA can range from mild symptoms of airways obstruction to fatal destructive lung disease. Apart from asthma, ABPA may also be associated with other clinical atopic conditions [84]. Usually seen in the 20–40-year age group, ABPA has also been reported in children [85, 86] and even in infants [87]. Repeated episodes of asthmatic exacerbations interspersed with periods of remissions are observed which, if untreated, eventually culminate in a fibrotic lung disease resembling the chronic fibrocavitary disease of pulmonary tuberculosis [88].

Expectoration of golden-brown plugs in the sputum, especially in poorly controlled asthmatics with peripheral eosinophilia, strongly suggests the possibility of ABPA [89]. The symptomatic presentation however, appears to bear little or no relationship to the severity or chronicity of the disease, as a third of the patients may be relatively asymptomatic despite extensive radiological lesions [90]. In an analysis of 113 patients with ABPA [91], 70 of whom were males, the mean age of the patients was 32 years while the mean age of asthma onset was 21 years. Cough (99%) and breathlessness (99%) were the commonest symptoms, followed by expectoration (98%), wheezing (97%) and haemoptysis (41%). Fever was seen in 80% and nasal

TABLE 2 Evolving diagnostic criteria for allergic bronchopulmonary aspergillosis (ABPA)

Rosenberg–Patterson criteria [73, 74]

- Major criteria
- Asthma
 - Presence of transient pulmonary infiltrates (fleeting shadows)
 - Immediate cutaneous reactivity to *Aspergillus fumigatus*
 - Elevated total serum IgE
 - Precipitating antibodies against *A. fumigatus*
 - Peripheral blood eosinophilia
 - Elevated serum IgE and IgG to *A. fumigatus*
 - Central/proximal bronchiectasis with normal tapering of distal bronchi
- Minor criteria
- Expectoration of golden brownish sputum plugs
 - Positive sputum culture for *Aspergillus* species
 - Late (Arthus type) skin reactivity to *A. fumigatus*

Minimal essential criteria [19]

- Asthma
- Immediate cutaneous reactivity to *A. fumigatus*
 - Total serum IgE $>1000 \text{ ng}\cdot\text{mL}^{-1}$ ($417 \text{ kU}\cdot\text{L}^{-1}$)
 - Elevated specific IgE-/IgG to *A. fumigatus*
 - Central bronchiectasis in the absence of distal bronchiectasis

Truly minimal criteria [18]

- Asthma
- Immediate cutaneous reactivity to *A. fumigatus*
 - Total serum IgE $>1000 \text{ ng}\cdot\text{mL}^{-1}$ ($417 \text{ kU}\cdot\text{L}^{-1}$)
 - Central bronchiectasis in the absence of distal bronchiectasis

ISHAM working group [68]

- Predisposing conditions
- Bronchial asthma
 - Cystic fibrosis
- Obligatory criteria (both should be present)
- Type I *Aspergillus* skin test positive (immediate cutaneous hypersensitivity to *Aspergillus* antigen) or elevated IgE levels against *A. fumigatus*
 - Elevated total IgE levels ($>1000 \text{ IU}\cdot\text{mL}^{-1}$)[#]
- Other criteria (at least two of three)
- Presence of precipitating or IgG antibodies against *A. fumigatus* in serum
 - Radiographic pulmonary opacities consistent with ABPA
 - Total eosinophil count $>500 \text{ cells}\cdot\mu\text{L}^{-1}$ in steroid naïve patients (may be historical)

ISHAM: International Society for Human and Animal Mycology. [#]: if the patient meets all other criteria an IgE value $<1000 \text{ IU}\cdot\text{mL}^{-1}$ may be acceptable.

symptoms in 45%. Sputum plugs were expectorated by 37% and nasal plugs by 6%. A personal/family history of atopic diseases was present in approximately half of the patients.

Radiological manifestations

Although ABPA is now a well-recognised pulmonary disease, it is not yet diagnosed as frequently and as early as it should be; thereby causing preventable chronic lung damage [92]. Ever since its first description, imaging techniques have played a pivotal role for the diagnosis and monitoring of ABPA [93, 94].

Plain chest radiography

ABPA can be regarded as a “picturesque” disease because of the wide spectrum of appearances seen on chest radiography [94–97]. These images can be either transient or permanent (table 3). In their seminal description of ABPA in 1952, HINSON *et al.* [3] recognised fleeting shadows as a characteristic feature of this disease. These opacities usually appear and disappear in different areas of the lung over a period of time and are also known as transient pulmonary infiltrates (figs 1 and 2). In a review of 1340 chest radiographs from 113 patients with ABPA, fleeting shadows were observed in 89% [91]. These changes, usually seen in either the acute or exacerbation stage of the disease, indicate the presence of an active disease process. Mucoid impaction causes this phenomenon, which is due to secretions in the damaged bronchi. These infiltrates may clear with or without therapy. Although these radiological appearances can closely resemble those seen in tuberculosis, serial radiographs in ABPA may reveal the transient nature of these migratory infiltrates [94]. When these opacities keep recurring at the same sites they are described as recurrent fixed shadows [98].

TABLE 3 Radiological changes in allergic bronchopulmonary aspergillosis

Plain chest radiology

Transient changes

- Perihilar infiltrates simulating adenopathy
- Air–fluid levels from dilated central bronchi filled with fluid and debris
- Massive consolidation: unilateral or bilateral
- Radiological infiltrates
- “Toothpaste” shadows due to mucoid impaction in damaged bronchi
- “Gloved finger” shadows from distally occluded bronchi filled with secretions
- “Tramline” shadows representing oedema of the bronchial walls
- Collapse: lobar or segmental

Permanent changes

- Central bronchiectasis with normal peripheral bronchi
- Parallel-line shadows representing bronchial widening
- Ring-shadows 1–2 cm in diameter representing dilated bronchi *en face*
- Pulmonary fibrosis
- Late changes: cavitation, contracted upper lobes and localised emphysema

Computed tomography findings

Bronchial abnormalities

- Bronchiectasis, usually central, as characterised by the “signet ring” and “string of pearls” appearances
- Dilated bronchi with or without air–fluid levels
- Totally occluded bronchi
- Bronchial wall thickening
- Parallel-line opacities extending to the periphery
- High attenuation mucus plugs

Parenchymal changes

- Consolidation
- Non-homogeneous patchy opacities
- Parenchymal scarring of varying extent
- Segmental or lobar collapse
- Cavitation
- Emphysematous bullae

Pleural involvement

- Pleural effusions
- Spontaneous pneumothorax
- Bronchopleural fistula
- Pleural fibrosis
- Pleural thickening

Information from [1, 93].

Consolidation or non-homogeneous infiltrations are the most commonly observed patterns, described in up to 91% of patients with ABPA [91, 95–97]. Perihilar or pseudohilar infiltrates may simulate hilar adenopathy in ABPA. These infiltrates are found in 40–77% of patients [91, 96], and are seen surrounding the secretion-filled dilated central bronchi. True hilar adenopathy, which resolved on therapy, was also documented in ABPA in adults [99, 100], as well as a single report in a 3.5-year-old child [86]. The presence of other features including tramline sign, V-Y shaped or wine glass shadows (fig. 3), toothpaste shadows and gloved finger shadows should raise the possibility of ABPA. Wine glass shadows were observed in 27% of 113 patients from India [91]. Lobar or segmental collapse is not uncommon. A patient with concomitant ABPA and AAS presenting as a middle lobe syndrome has been described previously [101]. The permanent opacities reflect the irreversible fibrotic changes and tend to persist throughout life. The most pathognomonic of these is the occurrence of central bronchiectasis with normal peripheral bronchi, and is considered as the *sine qua non* for the diagnosis of ABPA in patients without CF [102].

Demonstration of central bronchiectasis

When ABPA is suspected, the pulmonologist almost always immediately searches for the presence of central bronchiectasis, as this feature, when present, is considered to be diagnostic of the disease. On plain chest radiographs, central bronchiectasis is seen either as parallel line opacities, representing widening of the bronchi, or as ring opacities 1–2 cm in diameter, representing dilated bronchi *en face*. Parallel line shadows were observed in 65–70% of patients with ABPA [91, 95, 96] and ring shadows in 45–68%



FIGURE 1 Chest radiograph showing a non-homogeneous opacity in the right mid zone with perihilar patchy infiltrates in the left mid and lower zones. Transient pulmonary infiltrates or fleeting shadows that are characteristic of allergic bronchopulmonary aspergillosis are visible.

[91, 95–97]. Bronchography, once regarded as the reference standard for the demonstration of central bronchiectasis, gave a one-time complete picture of the entire tracheobronchial tree [103]. Earlier, linear tomography was also used to document central bronchiectasis [104]. Both these methods have now been replaced by computed tomography (CT). High-resolution CT, in particular, has emerged as the investigation of choice for the demonstration of bronchiectasis [93, 103]. It has already been shown that CT, in comparison to bronchography, a procedure thought to be unsafe in asthma, has a sensitivity of 83% and a specificity of 92% in detecting central bronchiectasis in patients with ABPA [103]. CT scans also enabled rapid and safe establishment of diagnosis in children with ABPA who presented with acute severe asthma [105].

On CT, bronchiectasis is characterised by the signet ring (fig. 4a) and string of pearls (fig. 4b) appearances [106]. In ABPA, bronchiectasis tends to be more common in the upper lobes [93, 107] in contrast to the “usual” bronchiectasis that predominantly affects the lower lobes. In an arbitrary classification, bronchiectasis was considered to be central when limited to only the medial two-thirds or medial half of the lung [108]. Extension of central bronchiectasis to the periphery was observed in 30% of the lobes and 21% of the segments [91]. However, demonstration of central bronchiectasis with normal peripheral bronchi, which occurred in the majority of segments, should continue, in our opinion, to be regarded as a *sine qua non* for ABPA [102].

Other CT findings

Apart from bronchiectasis, other bronchial findings include dilated bronchi with or without air–fluid levels, totally occluded bronchi, bronchial wall thickening and parallel line opacities extending to the periphery. The parenchymal abnormalities mainly include consolidation, non-homogeneous patchy opacities and parenchymal scarring of varying extent. Segmental or lobar collapse, cavitation, fibrosis, contracted upper lobes and localised emphysema are not uncommon [94]. The fibrotic stage of ABPA may be difficult to distinguish from fibrocavitary pulmonary tuberculosis [85, 109, 110].

High-attenuation mucus plugging

With the advent of high-resolution CT, high-attenuation mucus (HAM) plugging (fig. 5) was also noted in up to 28% of patients with ABPA [111]. The mucus plug is said to be hyperattenuating if it is visibly denser than the paraspinal skeletal muscle. This characteristic CT finding has now been highlighted by the ISHAM working group as a pathognomonic feature of ABPA [68]. An analysis of 155 patients with ABPA revealed that patients with HAM had significantly higher levels of eosinophils, total IgE and IgE-*A. fumigatus* at the time of diagnosis [69].



FIGURE 2 Chest radiograph of the same patient as in figure 1 taken 18 months later showing a large consolidation in the right upper and mid zones with partial resolution of the left-sided perihilar infiltrate. In addition, blunting of the right costophrenic angle suggestive of pleural effusion can be seen. Transient pulmonary infiltrates or fleeting shadows that are characteristic of allergic bronchopulmonary aspergillosis are visible.

Pleural involvement

Pleural effusions were first highlighted in two patients with ABPA in 1981 [112]. Ipsilateral pleural effusion, most likely due to the mechanical effect of lung collapse, in a patient with ABPA, AAS and an operated aspergilloma has also been described previously [113]. Therapy with steroids led to resolution of the effusion followed by re-expansion of the affected lobe. Bilateral asymmetrical pleural effusion was also reported in a young adult male [114]. The authors postulated that the fluid collection resulted “from an inflammatory pleural reaction adjacent to inflamed lung tissue” Other pleural findings in ABPA include spontaneous pneumothorax [115], bronchopleural fistula [116] and pleural fibrosis [93, 117]. Pleural based lesions were seen on CT in 43% of patients [93]. Another study found pleural thickening in 82% of subjects with ABPA [118]. Although pleural involvement does not appear to have much clinical significance, this aspect of ABPA is yet to be highlighted.

Laboratory findings

In addition to radiology, other investigations utilised for the diagnosis and monitoring of ABPA include skin testing with *Aspergillus* antigens, peripheral eosinophil count, serum total IgE, *A. fumigatus*-specific IgE and IgG, and precipitating antibodies against *A. fumigatus*. Sputum examination often provides an important clue in patients with asthma and CF.



FIGURE 3 Chest radiograph showing characteristic wine glass opacity in the left upper zone. A non-homogeneous consolidation is also seen on the right side.

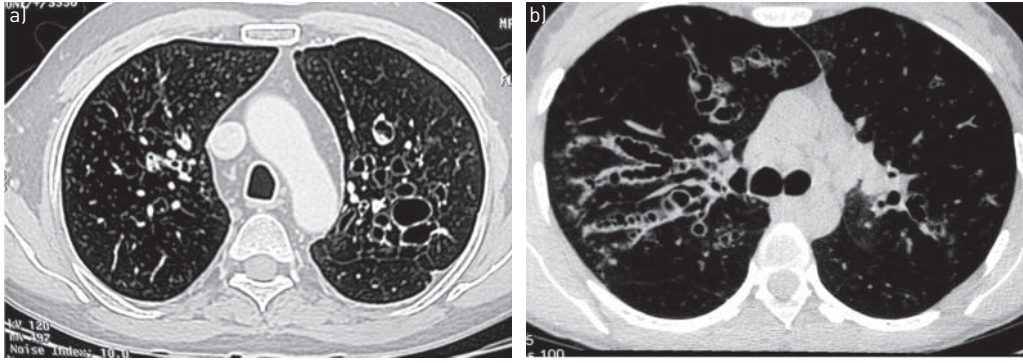


FIGURE 4 a) Computed tomography of the thorax showing signet ring appearances, indicative of central bronchiectasis. Mucoid impaction and dilated bronchi are also visible. b) Computed tomography of the thorax showing string of pearls appearances bilaterally, indicative of central bronchiectasis.

Skin testing

HINSON *et al.* [3] stated that cutaneous hypersensitivity reactions with fungal extracts were “inconstant and unreliable” in all three of their patients. Since ABPA is basically an allergic response to *Aspergillus* antigens, skin sensitivity to *Aspergillus* was subsequently demonstrated in almost all patients with ABPA described to date. Although more than 150 species of *Aspergillus* exist, the main incriminating species are *A. fumigatus* followed by *A. flavus*, *A. niger*, *A. terreus*, and *A. nidulans*. Either the skin-prick test or the intradermal method can be employed for *Aspergillus* skin testing. There exists a marked variation in the *Aspergillus* antigen extract used for skin testing. This depends on the technique, potency and the geographical region [119]. These factors, along with the type of test performed, expertise in interpretation of readings and patients’ age variations, are reflected in the accuracy of the results [120]. Although intradermal tests are more sensitive than the skin-prick tests, higher false positive results are noted. Currently, the skin-prick test is the favoured technique, serving as a simple screening tool for ABPA. If the skin-prick test is negative, then intradermal testing may be conducted to exclude *Aspergillus* sensitisation.

Both type I (immediate) and type III (delayed) responses can be observed in ABPA. In the first ever large series of 111 patients with ABPA published in 1971 [89], type I skin-prick sensitivity with *A. fumigatus* antigens was seen in all cases and with *A. terreus* in 92 (83%) cases. The type III reaction to *A. fumigatus* was positive in 16% of the patients. Intradermal testing with *A. fumigatus* extract, performed in 80 patients, also elicited immediate (type I) reactions in 100% and delayed (type III) hypersensitivity in 97%. Although the type III reaction was completely suppressed after therapy with corticosteroids, there was no effect on the type I response even after intensive treatment. Since skin-prick testing is a highly sensitive test for ABPA, a negative result in asthmatic subjects would essentially rule out the possibility of AIA or ABPA. Thus, *Aspergillus* skin testing would be very helpful in clinical decision making when patients with asthma are screened for ABPA [18]. However, negative skin sensitivity to *Aspergillus* antigens would not rule out ABPM.

Currently, recombinant *A. fumigatus* allergens have been cloned, purified and standardised for testing. Although they have similar functional characteristics to the commercially available fungal extracts, these recombinant allergens help in differentiating ABPA from *Aspergillus* sensitisation in patients with asthma

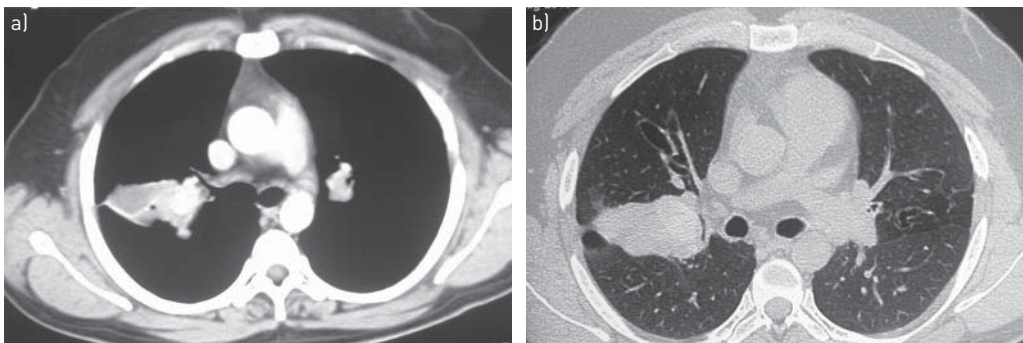


FIGURE 5 High-resolution computed tomography of the thorax a) mediastinal window and b) corresponding section on the lung window showing high attenuation mucus impaction.

and CF. This differentiation is important as type I sensitivity can be demonstrated in up to ~40% of all asthmatics [68] and in up to 56% of patients with CF [121]. Amongst all the *A. fumigatus* sensitised patients with CF, three out of six patients with associated ABPA were negative on skin-prick testing with recombinant *A. fumigatus* allergen I/a (rAsp f I/a) [122]. In another study in 50 patients with CF (12 with ABPA, 17 with *Aspergillus* sensitisation without ABPA, and 21 not sensitised to *A. fumigatus*), skin reactivity to 1:100 or higher dilutions of the cloned rAsp f 4 and rAsp f 6 was not observed in any of the 38 patients without ABPA [123]. These two recombinant allergens were found to be reliable markers for ABPA in CF.

Eosinophil count

Peripheral blood eosinophilia ($>1000 \text{ cells}\cdot\mu\text{L}^{-1}$), one of the major diagnostic criteria, is often the initial diagnostic indicator in a patient with asthma and fleeting pulmonary infiltrates. However, high eosinophil counts may be observed in numerous other diseases while normal levels may be found in patients who are already receiving oral corticosteroids. Given the poor specificity of this test, The ISHAM working group [68] has relegated eosinophilia to “other” criteria. During exacerbations, when oral corticosteroids have not been initiated, most patients have an absolute eosinophil count ranging between 1000 and 3000 $\text{cells}\cdot\text{mm}^{-3}$, which may return to near normal with oral corticosteroids.

Total serum IgE

Elevated total serum IgE is a part of the minimal essential criteria [19], as well one of the truly minimal criteria [18], for diagnosis. Any patient with active disease is unlikely to have a normal IgE level. Although more than four decades have elapsed since its recognition as one of the major criteria, the cut-off level for IgE remains contentious. When the major and minor diagnostic criteria were suggested [73, 74], the proposed cut-off level was $1000 \text{ IU}\cdot\text{mL}^{-1}$ ($\sim 2500 \text{ ng}\cdot\text{mL}^{-1}$). However, as per the minimal essential criteria [19], the serum IgE level required for establishing the diagnosis was reduced to $417 \text{ IU}\cdot\text{mL}^{-1}$ ($1000 \text{ ng}\cdot\text{mL}^{-1}$). Patients with AIA and SAFS without ABPA also exhibit a wide range of elevated IgE levels. According to the ABPA in CF consensus criteria, serum IgE $>500 \text{ IU}\cdot\text{mL}^{-1}$ is considered diagnostic [62]. The ISHAM working group has proposed a cut-off level of $1000 \text{ IU}\cdot\text{mL}^{-1}$ [68], as they “felt that a cut-off of $500 \text{ IU}\cdot\text{mL}^{-1}$ may lead to over diagnosis of ABPA”. This value needs global validation as it could possibly be affected by ethnicity and exposure risk.

Specific IgE/IgG to A. fumigatus

Detection of sufficiently high levels of serum IgE and IgG antibodies specific to *A. fumigatus* is also one of the minimal essential criteria that need to be fulfilled for the diagnosis of ABPA [19]. ELISA was initially used for estimation but was replaced by the radioimmunoassay method as low levels of IgE-*A. fumigatus* could not be detected by ELISA [124]. However, the radioimmunoassay technique also had drawbacks, such as short shelf-life of the radioisotope and exposure to radioactivity. Using the biotin avidin-linked immunosorbent assay method in 13 patients with ABPA, nine patients with AIA, 12 with aspergilloma and nine controls without asthma, significantly higher IgE-*A. fumigatus* levels were found in patients with ABPA, even at very high dilutions of 1:1000 [125]. The authors postulated that this could be due to a polyclonal antibody response to *Aspergillus* antigens in patients with ABPA, which is not seen in AIA. As mentioned in the minimal essential criteria for diagnosis, the serum values of IgE- and IgG-*A. fumigatus* in patients with ABPA should be at least double the pooled serum samples of patients with AIA [59]. If values from the controls are not available for comparison, then, as suggested by the ISHAM working group, an IgE-*A. fumigatus* level $>0.35 \text{ kUA}\cdot\text{L}^{-1}$ could be considered [68]. However, in an appropriate clinical setting, very high serum levels of IgE- or IgG-*A. fumigatus* may be diagnostic of ABPA [59, 74]. Using recombinant *A. fumigatus* allergens, ABPA can be distinguished from AIA with high specificity (100%) and sensitivity (90%) [126]. Exclusivity of rAsp f 2 for ABPA has also been documented [127]. In patients with CF, high levels of specific IgE to recombinant *A. fumigatus* allergens helped in differentiating those with associated ABPA from the non-ABPA CF patients [128, 129].

It is now recognised that a subset of patients with ABPA present either at an earlier stage of the disease or with a milder form. In these patients, central bronchiectasis is not present but other diagnostic criteria are fulfilled [77, 130]. Such serologically positive patients who meet all other ABPA criteria except central bronchiectasis, are categorised as serological ABPA and treatment can be initiated to avoid further chronic lung damage. In the presence of central bronchiectasis, the patient is labelled as ABPA-central bronchiectasis [130]. In order to correlate the severity of central bronchiectasis on high-resolution CT, it was observed that eosinophils and neutrophils in induced sputum were higher in patients with ABPA-central bronchiectasis compared to those with serological ABPA [131].

Precipitating antibodies against A. fumigatus

Precipitating antibodies against *A. fumigatus*, as demonstrated by the double immunodiffusion technique of OUTCHERLONY [132], can be detected in the unconcentrated serum of 70% of patients [89]. When the serum is concentrated, these antibodies can be detected in 92% of patients with a radiological infiltrate [89]. These precipitating antibodies may also be present in 10% of asthmatics who do not have ABPA [7]. High levels of serum precipitins against *A. fumigatus* have also been shown in various other forms of chronic pulmonary aspergillosis [133]. High titres in patients with ABPA could imply the presence of complicating features such as fibrosis and cavitation [134].

Sputum examination

In patients with productive cough, sputum eosinophilia is often present and fungal hyphae may be demonstrated on sputum smear examination. The presence of plugs in the sputum, coinciding with acute febrile illness, was noted in two of the three patients in the first report of ABPA by HINSON *et al.* [3]. In addition, sputum culture for *A. fumigatus* was positive in all three patients. Over the years, expectoration of golden-brownish sputum plugs has been noted in up to 56% of patients with ABPA [89, 91], whilst sputum culture yielded *Aspergillus* species in ~58% of cases [89]. Repeated growth of *Aspergillus* in the sputum of a patient with AIA should increase the suspicion of ABPA. However, the specificity of sputum testing for ABPA is not very high and, as such, is categorised under the minor criteria for diagnosis.

Detectable *A. fumigatus* DNA in the sputa of patients with ABPA, in whom routine cultures for *Aspergillus* were negative, was also observed [135]. There is a role for sputum analysis in monitoring the severity of disease and in determining the course of the illness. As mentioned previously, higher levels of sputum eosinophilia and neutrophilia were found in patients with ABPA-central bronchiectasis when compared with serological ABPA [131]. Sputum cultures and molecular testing may also help in assessing the response to antifungal therapy, as well as in identifying drug resistance to azoles.

Pulmonary function testing

Pulmonary function testing in ABPA does not help the pulmonologist to assess the severity or the extent of the disease. During the remission stage, even in the presence of bronchiectasis, the lung volumes and flow rates could be normal if the asthma is well controlled. An obstructive airflow pattern is most commonly found during an acute episode or an exacerbation. Nevertheless, a restrictive pattern along with reduction in total lung capacity and impaired diffusion capacity of the lung for carbon monoxide may also be seen. Varying degrees of obstruction are noted in patients in the corticosteroid-dependent stage. When the disease progresses to the chronic fibrotic stage, the pulmonary function testing typically shows an irreversible mixed pattern characterised by airflow obstruction, reduced lung volumes and low diffusion capacity [136]. Apart from obstructive airways disease, restriction, as well as a mixed pattern, has also been observed in either the acute or exacerbation stages (stages 1 and 3) of ABPA [137]. The forced expiratory volume in 1 s (FEV₁), FEV₁/forced vital capacity ratio and forced expiratory flow of 25–75% of forced vital capacity were significantly ($p < 0.05$) reduced in patients with a mean duration of illness >10 years. A reduced diffusing capacity was also found in almost half of the patients tested.

Staging

Conventionally, five stages of ABPA were identified [138, 139]: 1) acute, 2) remission, 3) exacerbation, 4) corticosteroid-dependent asthma, and 5) fibrotic lung disease. Staging of the disease should be done at the time of diagnosis and re-evaluated periodically. In patients with acute disease (stage 1), remission (stage 2) may occur either spontaneously or may be induced by treatment. Although very few patients remain in remission for prolonged periods, exacerbation after prolonged remission was seen in a patient with ABPA and an associated aspergilloma [140]. It is sometimes difficult to taper off oral corticosteroids in stage 1 patients and these patients could progress directly to the corticosteroid-dependent stage (stage 4). This stage can be difficult to distinguish from corticosteroid-dependent asthma without ABPA [141]. Patients with a long-standing illness along with extensive bronchiectasis develop end-stage lung fibrosis (stage 5) and may present with respiratory failure. Fibrotic lung disease in stage 5 ABPA may be associated with clubbing and cavitation [85], and is often difficult to differentiate from fibrocavitary disease caused by tuberculosis [109, 110].

The ISHAM working group has proposed a new clinical staging of ABPA in asthma [68]. Stage 0, added prior to stage 1, includes clinically stable and well-controlled asthmatic subjects who do not have any clinical features suggestive of ABPA but are diagnosed as ABPA when routinely investigated as per the criteria. This would be helpful in recognising the disease at the initial stage, which would enable commencement of appropriate treatment at the earliest and possibly prevent progression to the fibrotic stage. Stage 1 has been subclassified as 1a (with mucoid impaction, as documented on imaging or bronchoscopy) and 1b (without mucoid impaction). A patient is said to be in stage 2 (response) when

there is clinico-radiological improvement and at least a 25% decline in serum IgE level at 8 weeks of therapy. Stage 3 (exacerbation) occurs after clinical and/or radiological worsening is associated with an increase in IgE level by >50% of baseline. Stage 4 (remission) is defined when there is sustained clinico-radiological improvement along with baseline IgE values (or <50% increase) for >6 months duration without systemic corticosteroids. Stage 5 has been subclassified into 5a (treatment dependent ABPA, where frequent courses of corticosteroids or azoles are required for controlling the activity of ABPA) and 5b (steroid dependent asthma, where systemic steroids are required for control of asthma whilst activity of ABPA is under control). In stage 6, the patient has advanced disease with radiological features of fibrosis along with clinical signs of cor pulmonale and type 2 respiratory failure. However, this newly proposed stage would require validation.

Radiological staging

Based on thoracic CT findings, the ISHAM working group has proposed a new radiological classification of ABPA [68]. The purpose of this classification scheme is to correlate the immunological severity of the disease with various radiological features. The presence of HAM has previously been demonstrated to be associated with increased levels of IgE-*A. fumigatus* [142]. The four major categories proposed by the ISHAM working group, as the disease progresses from mild to moderate to severe, include [68]: 1) serological ABPA, 2) ABPA with bronchiectasis, 3) ABPA with HAM, and 4) ABPA with chronic pleuropulmonary fibrosis. In order to be classified as ABPA-chronic pleuropulmonary fibrosis, at least two other findings, apart from bronchiectasis and HAM, such as pulmonary fibrosis, parenchymal scarring, fibrocavitary lesions, aspergilloma and pleural thickening should be present.

Treatment

The goals of therapy for ABPA include [61]: 1) detection and prompt treatment of exacerbations in order to prevent or minimise the development of central bronchiectasis; 2) management of underlying asthma (stages 1 to 4) or irreversible lung disease (stage 5); 3) exclusion of ABPA among family members; and 4) identification of any potential environmental source of the incriminated fungus. The treatment provided should aim at achieving remission in order to avoid further lung damage. Moreover, the drugs prescribed should have the least possible adverse effects. To date, there are no well-designed clinical trials for pharmacological intervention in ABPA. Systemic glucocorticoids and antifungal agents are the two main groups of drugs studied to date. The usage of inhaled corticosteroids alone may only help to achieve asthma control but would not prevent symptomatic exacerbations.

Glucocorticoids

Oral corticosteroids are the mainstay for the treatment of ABPA [143]. In view of their anti-inflammatory properties, they aid in suppressing the immune hyperreactivity that is present in patients with asthma and ABPA. Steroids also decrease sputum production and inhibit the toxic antigen-antibody reaction between the fungi and the host, thereby rendering the bronchi less hospitable for *Aspergillus*. Various glucocorticoid regimens incorporating different doses and duration of therapy have been advocated for the management of ABPA. In patients with stages 1 (acute) and 3 (exacerbation) of the disease, the most widely advocated steroid protocol is prednisolone ($0.5 \text{ mg}\cdot\text{kg}^{-1}\cdot\text{day}^{-1}$ for the first 2 weeks followed by $0.5 \text{ mg}\cdot\text{kg}^{-1}\cdot\text{day}^{-1}$ on alternate days for the next 2 months) [59]. Once decline in the total serum IgE level >35% is achieved, the dosage can be tapered off by 2.5 mg every 2 weeks [144]. Stage 4 ABPA patients are managed with 10–40 mg prednisolone on alternate days for many years as repeated attempts to discontinue may result in unacceptable wheezing. If prednisolone can be discontinued, the patient should initially be evaluated every 6–8 weeks to help determine whether remission (stage 2) is maintained. Stage 5 patients may require daily prednisolone along with therapy for cor pulmonale and hypoxaemia [61, 145].

In order to shorten the duration of corticosteroid therapy, a higher initial dosage of prednisolone, $0.75 \text{ mg}\cdot\text{kg}^{-1}\cdot\text{day}^{-1}$ for the initial 6 weeks that was subsequently tapered off, was tried. This was associated with higher remission rates and less chances of progressing to the steroid-dependent stage [146, 147]. In one of the older case series wherein oral corticosteroids were prescribed for only 3 months duration [77], approximately half of the patients also progressed to the steroid-dependent stage. The aggressive higher initial corticosteroid regimen advocated by some authors to obtain “the best long-term outcomes” currently appears to have limited documentary support [148]. The findings of a randomised controlled trial on the efficacy and safety of two different corticosteroid regimens in ABPA are awaited (www.clinicaltrials.gov identifier number NCT00974766).

Since oral prednisolone needs to be prescribed for long durations, the feasibility of a biweekly dosing schedule was assessed in 26 patients with ABPA with or without AAS [149]. After the initial daily dosage for 2 weeks, patients were alternately prescribed either the conventional alternate day tapering regimen or a

twice weekly dosing schedule. A significant improvement in FEV₁, total IgE levels and eosinophil counts was noted in patients receiving the biweekly regimen. This may possibly help in reducing the well-known adverse effects of long-term corticosteroid therapy. Several studies in children with ABPA and CF have demonstrated the usefulness of intravenous pulse methylprednisolone therapy for the management of severe, and sometimes life-threatening, exacerbations [150–152].

Antifungal agents

The role of antifungal agents in the treatment of ABPA is not fully determined. By reducing the fungal burden, this group of drugs helps in suppressing the inflammatory response by mitigating the antigenic stimulus [153]. All-in-all, this would minimise the need for corticosteroid therapy [154]. In the initial studies, older antifungal molecules including natamycin, hamycin, amphotericin B, miconazole, clotrimazole and ketoconazole were used but were either ineffective or exhibited adverse reactions.

Subsequently, the focus of attention has been on itraconazole, a less toxic and more active drug, with two randomised double-blind trials being published to date [155, 156]. In the first study, patients with steroid dependent (stage 4) ABPA were administered either itraconazole 200 mg twice daily or placebo over 16 weeks [155]. Patient in the study group demonstrated lower total IgE levels, improved lung function parameters, increased exercise tolerance and, most importantly, a decrease in the dosage of oral corticosteroids. In the second study, which included “clinically stable” patients, concurrent itraconazole usage of 400 mg daily or placebo for 16 weeks resulted in a significant decline in sputum inflammatory markers and serum IgE levels [156]. Both these trials were short term since relapse of ABPA beyond 8 months was not assessed in either study. WARK [26] then concluded that “itraconazole improves short-term symptoms and reduces the frequency of exacerbations that require the use of oral corticosteroids”. The author also cautioned that the drug “may exacerbate the adrenal suppression seen with regular corticosteroids use”. Periodic itraconazole blood levels should be monitored for ensuring adequate bioavailability as lower than therapeutic levels may result in clinical failure and possible development of drug resistance [157, 158]. Resistance to both itraconazole and voriconazole along with reduced susceptibility to posaconazole was documented in a patient with ABPA previously exposed to itraconazole. The patient responded to high-dose posaconazole [159].

Until further information from large randomised, double-blind, placebo-controlled, parallel, long-term studies is available, the use of itraconazole alone should be restricted to patients in whom oral corticosteroids are absolutely contraindicated. Itraconazole may be added in patients experiencing recurrent exacerbations despite adequate steroid therapy. The role of itraconazole monotherapy for ABPA is still not established. Currently, a randomised trial on monotherapy of itraconazole *versus* prednisolone in ABPA is underway (www.clinicaltrials.gov identifier NCT01321827). Voriconazole and posaconazole, two newer azoles, have also been tried in patients with ABPA [160–164]. However, serious adverse effects such as skin cancer were associated with long-term voriconazole therapy [165].

Omalizumab

In the past, the role of omalizumab, a monoclonal antibody against IgE, has been investigated for the treatment of ABPA. Most of the initial studies were in patients with underlying CF [166–168]. The results were encouraging as there was a significant improvement in symptoms, pulmonary functions, hospitalisation episodes and exacerbation rates. In addition, a reduction in the usage of oral corticosteroids was noted. Recent studies in patients with ABPA due to underlying asthma also demonstrated statistically significant symptom control, reduction in eosinophilia and total IgE levels, improved FEV₁, fewer asthma exacerbations and decreased usage of oral corticosteroids after appropriate therapy with omalizumab [169–171]. This drug could possibly have the potential to emerge as a steroid-sparing alternative in a select subset of patients who continue to remain corticosteroid dependent (stage 4). Since there are no randomised studies performed to date with omalizumab, routine usage in ABPA is not yet recommended. Currently, it is being prescribed in patients with CF who have corticosteroid dependence or in those with adverse reactions to steroid therapy.

ABPA and CF

Other than asthma, ABPA can also occur in CF. Atopy is the main risk factor for ABPA in patients with CF [172]. The mucous present within the bronchi provides a favourable environment for the germination of inhaled *Aspergillus* spores. The prevalence of ABPA in CF is not truly defined and this could be as high as 25% [173]. This discrepancy has been attributed to the lack of uniform diagnostic criteria, which is due to the remarkable similarities in the clinical presentations and chest radiograph appearances in CF and ABPA patients. However, the presence of central bronchiectasis with normal peripheral bronchi, the key diagnostic

component in ABPA, is not helpful in diagnosing ABPA in patients with CF. In contrast to ABPA, bronchiectasis also extends to the periphery in CF.

A large database from the Epidemiologic Study of Cystic Fibrosis (ESCF), conducted in the USA and Canada, was used to estimate the prevalence of ABPA in patients with CF [174]. The ESCF criteria adopted for the diagnosis of ABPA in CF included the presence of two of the following: 1) immediate skin reactivity to *A. fumigatus* antigens, 2) precipitating antibodies to *A. fumigatus* antigens, and 3) total serum IgE >1000 IU·mL⁻¹; and at least two of the following: 1) bronchoconstriction, 2) peripheral blood eosinophilia >1000 cells·μL⁻¹, 3) history of pulmonary infiltrates, 4) elevated specific IgE-/IgG-*A. fumigatus*, 5) *A. fumigatus* in sputum by smear or culture, and 6) response to steroids. Based on this, the overall reported prevalence of ABPA in CF was found to be 2%. In a subsequent study from Europe [173], based on analysis of Epidemiologic Registry of Cystic Fibrosis (ERCF) data from nine countries, the overall prevalence of ABPA in the ERCF population was 7.8%. A validated set of criteria for the diagnosis of ABPA in CF is yet to be established and the suspicion of ABPA in patients with CF is based on the collection of clinical, radiological and immunological parameters.

Treatment for ABPA remains the same in patients with CF as they also respond to oral corticosteroids. However, the adverse effects of oral steroids such as steroid-induced diabetes, osteoporosis and pathological fractures may be exaggerated in these patients. This makes the management of ABPA in patients with CF difficult. Itraconazole as a steroid-sparing agent has been well tolerated in patients without underlying liver disease, leading to a 50% reduction in the average oral steroid dose [172]. Omalizumab also has been shown to help in decreasing the requirement of corticosteroids in this group of patients [166–168].

ABPA in chronic obstructive pulmonary disease and other respiratory disorders

Apart from asthma, ABPA has also been documented in patients with chronic obstructive pulmonary disease (COPD) [175, 176]. In addition, single case reports of ABPA associated with other lung diseases including chronic granulomatous disease and hyper-IgE syndrome [177] and Kartagener's syndrome [178] have been published.

The disease processes in asthma and COPD are somewhat similar. As proposed in the Dutch hypothesis, the development of either asthma or COPD would depend on the modulation of host factors by various environmental stimuli. Increased bronchial hyperreactivity [179], elevated total IgE levels [180] and peripheral eosinophilia [181] have been demonstrated in smokers. A subset of patients with COPD exists in whom eosinophilic inflammation of the airways, impaired mucociliary clearance and mucus hypersecretion is found [182, 183]. This could potentially lead to increased *Aspergillus* colonisation and subsequent development of ABPA in COPD [176]. In 200 patients with COPD, *Aspergillus* sensitisation was documented in 8.5% and only two (1%) patients had serological ABPA [175]. The rarity of the association of ABPA and COPD could possibly be due to differences in the nature of airway inflammation in COPD and asthma, as well as differences in the genetic predisposition [176]. Further studies are warranted to determine the frequency of ABPA in COPD.

Allergic bronchopulmonary mycoses

Some patients present with bronchial asthma, a history of expectoration of sputum plugs, fleeting shadows on serial chest radiographs, peripheral blood eosinophilia and increased total IgE but with negative skin-prick/intradermal and serologic tests for *Aspergillus*. This syndrome, akin to ABPA, is caused by fungi other than *Aspergillus* and is collectively known as ABPM [184]. Sputum examination usually provides the first clue. The diagnosis is established according to the Rosenberg–Patterson criteria [73, 74] as stated in a recent review on ABPM [185]. To date, more than 26 different fungi have been shown to cause ABPM [184]. The common fungi are *Candida albicans*, *Bipolaris*, *Schizophyllum commune*, *Curvularia lunata*, *Penicillium*, *Dreschlera hawaiiensis*, *Pseudoallescheria boydii*, *Alternaria alternata*, *Fusarium vasinfectum*, *Rhizopus oryzae*, *Geotrichum candidum* and *Stemphylium lanuginosum* [184, 185].

It may be difficult, without the facilities of a research laboratory, to prove the fungus responsible for ABPM. When features suggestive of ABPA are present, in particular central bronchiectasis, ABPM should be suspected and oral corticosteroids should be considered as ABPM responds well to the therapy. This is a prudent approach as ABPM, if left untreated, can lead to progressive and irreversible lung damage [184].

ABPA and other *Aspergillus*-related disorders

The clinical categories of *Aspergillus*-related respiratory disorders usually remain mutually exclusive. There is an overlapping disease mechanism in ABPA and AAS as both the entities are characterised by an IgE-mediated inflammatory response to *Aspergillus* antigens. However, concurrent ABPA and AAS have not often been reported [24, 101, 113, 186]. The coexistence of ABPA with an aspergilloma is also infrequently

described [109, 110, 187]. The association of ABPA, AAS and aspergilloma in the same patient has been documented to date only twice [113, 188].

Allergic Aspergillus sinusitis

In AAS, mucoid impaction akin to that in ABPA occurs in the paranasal sinuses [189, 190]. The first case of AAS, as a separate clinical entity, was published in 1981 [191]. Inhalation of *Aspergillus* spores via the sinonasal route leads to the release of antigenic material, which in turn sets into motion a similar chain of immunological reactions as encountered in the bronchi of patients with ABPA. Why the incriminating fungus has a predilection for the sinuses in some patients and the bronchi in others is still unknown. It has previously been reported that a quarter of patients with perennial rhinitis were sensitised to *Aspergillus* antigens [192], and rhinitis is an important risk factor for sinusitis. Furthermore, sensitisation to *Aspergillus* antigens increased the severity of sinusitis in patients with allergic rhinitis [193]. It is quite possible that patients with *Aspergillus*-sensitised rhinitis could be at a greater risk of developing AAS. When fungi other than *Aspergillus* are involved, the disease is labelled as allergic fungal sinusitis (AFS). Other fungi implicated in AFS include *Alternaria*, *Curvularia*, *Bipolaris*, *Exserohilum*, *Drechslera* and *Cladosporium* [194–197].

As in ABPA, a set of criteria is required for the diagnosis of AAS (table 4). The key feature is the presence of allergic mucin, which is the characteristic nasal pathological material comprising eosinophils, Charcot–Leyden crystals, cellular debris and scattered fungal hyphae [186]. Amongst the radiological modalities, CT is the gold standard for evaluation. The hallmark finding is the presence of heterogeneous densities, signifying opacification of the sinuses, with serpiginous areas of increased attenuation (fig. 6) on non-contrast scans [98, 198]. These hyperdense areas are due to calcium in the allergic mucin. Although there is no standard protocol for treating AAS/AFS, it appears prudent to adopt a combined approach with pharmacological therapy and surgical intervention [186, 199].

The first report of AAS with concurrent ABPA was published in 1988 [200] and several more cases have been reported since [24, 25, 101, 113, 186, 188, 201–204]. In a review of 95 patients with ABPA [186], radiological evidence of sinusitis was present in 22 patients. Concomitant AAS was diagnosed in seven out of nine patients who consented to the invasive procedures required to obtain histopathological specimens from the sinuses. However, the possibility of AAS could not be ruled out in the remaining 13 patients as they refused to undergo the surgery needed in order to establish the diagnosis. Hypothetically, the frequency of AAS among patients with ABPA could be higher.

To highlight the expression of fungal hypersensitivity in both upper and lower airways, VENARSKÉ and DESHAZO [202] coined the term “sinobronchial allergic mycosis” (the SAM syndrome). This description was based on five patients, three of whom were previously reported for their unusual presentations [24, 101, 113]. The authors further stated in the addendum that the other four cases of concomitant ABPA and AAS also fulfilled the criteria for SAM syndrome [186]. Three out of four pairs of patients with familial ABPA had concomitant AAS [25]. Among these eight patients, seven had symptoms suggestive of allergic rhinitis. Sinusitis on CT was demonstrated in four out of the seven, three of whom were finally diagnosed with concomitant AAS.

Since asthma and sinusitis are often seen by two different specialties, the occurrence of AAS in ABPA and of ABPA in AAS may easily be overlooked [186, 205]. There was no mention of concomitant ABPA in a series of 44 patients with AFS from the Mayo Clinic (Rochester, MN, USA) [206]. In another study of 67 consecutive cases of AFS predominantly caused by *Bipolaris spicifera*, concomitant AFS and ABPM were only seen in two patients [197]. In an analysis of 155 patients with ABPA from northern India, there was no mention of nasal symptoms [69]. Amongst the paediatric age group, asthma was identified in 20 children with fungal sinusitis but these were not investigated further for the presence of ABPA [207].

Aspergilloma

Fungal balls due to *Aspergillus* species, also known as aspergilloma, usually develop in pre-existing cavities, most commonly seen in healed tuberculosis, over a period ranging from a few months to >10 years [208]. Chronic lung damage in ABPA could quite possibly favour the development of an aspergilloma. This would be more evident when cavity formation is present in ABPA. Aspergillomas may appear either prior to or after the onset of ABPA. However, for reasons that are unknown, the concomitant occurrence of these two entities remains uncommon.

In patients with coexistent ABPA and aspergilloma [109, 110, 113, 187, 188], the fungal balls formed in pre-existing cavities many years after the diagnosis of ABPA. Moreover, corticosteroid therapy could hasten the development of an aspergilloma in patients with cavitary lung disease [109, 187]. The occurrence of ABPA in a patient with an aspergilloma has also been documented previously [209, 210]. The presence of an

TABLE 4 Diagnostic criteria for allergic *Aspergillus* sinusitis [186, 189]**Sinusitis of one or more paranasal sinus on radiography****Necrosed amorphous tissue along with oedematous polyps infiltrated with eosinophils on histopathological evaluation of material from the sinus****Demonstration of fungal elements in nasal discharge or in material obtained at the time of surgery by stain or culture****Absence of diabetes, previous or subsequent immunodeficiency disease, and treatment with immunosuppressive drugs****Absence of invasive fungal disease at the time of diagnosis or subsequently****Other features**

Peripheral blood eosinophilia

Type I and type III cutaneous hypersensitivity to *Aspergillus*Precipitating antibodies to *Aspergillus* antigensElevated total, as well as *Aspergillus*-specific, IgE levels

Characteristic computed tomography appearances

aspergilloma may function as a nidus for antigenic stimulation in a genetically predisposed individual [210]. In 1973, MCCARTHY and PEPYS [209] postulated that patients with aspergilloma could possibly have been sensitised to *Aspergillus* antigens, which in turn may lead to the development of ABPA. Multiple aspergillomas within multifocal lung parenchymal cavities have also been reported in patients with ABPA [109, 211]. PENDLETON and DENNING [211] have recently stated that, in patients with ABPA, associated multiple aspergillomas is a rare form of chronic pulmonary aspergillosis.

Managing such patients is a challenge to the clinician as steroid therapy could aggravate the underlying condition, especially in the presence of a pre-existing cavitory disease. The formation of aspergilloma occurred after the initiation of corticosteroid treatment in two published cases with concurrent ABPA and aspergilloma [109, 187]. One of these patients developed an exacerbation of ABPA after being in the remission stage for 3 years [140]. Usage of antifungal agents could help in reducing both the dosage of corticosteroids, as well as decreasing the fungal load in the airways. We had hypothesised that the presence of an aspergilloma in a patient with ABPA was likely to increase the severity of the disease [212]. Recently, AGARWAL *et al.* [213] lent support to our hypothesis by demonstrating recurrent relapses in their group of patients with coexistent ABPA and aspergilloma. All patients with ABPA and cavitation should be closely monitored when initiated on corticosteroids.

ABPA, AAS and aspergilloma

The association of ABPA, AAS and aspergilloma in the same patient has only been documented twice to date [113, 188]. The first patient had undergone a left lower lobectomy for severe haemoptysis, the cause of which was found to be an aspergilloma in a bronchiectatic cavity [113]. She was subsequently diagnosed as a case of ABPA and AAS when she presented with left pleural effusion and associated underlying collapse of



FIGURE 6 Computed tomography of the paranasal sinuses showing hyperdense lesions in the frontal, ethmoid and maxillary sinuses bilaterally, suggestive of inspissated secretions.

the left lung. In the second patient, all three clinical entities were diagnosed concurrently when he presented for evaluation of progressive respiratory symptoms [188]. In this patient, the aspergilloma disappeared after maintenance therapy with repeated courses of oral prednisolone.

Conclusions

In high tuberculous prevalence areas, patients with ABPA are often mistakenly diagnosed as having tuberculosis due to the radiological similarities. Such patients are often mistreated for a long duration while lung damage continues to progress silently. A patient walking into the pulmonology clinic with numerous chest radiographs and peripheral eosinophilia along with a history suggestive of asthma should always be investigated for ABPA. In essence, ABPA must be looked for in all asthmatics with positive skin sensitivity to *Aspergillus* antigens [8, 214] and must also be excluded in patients with COPD [175, 176]. In developing countries, CT scans remain expensive and laboratory investigations including mycology and *Aspergillus*-specific serology testing are not widely available. Often this delays diagnosis, thereby resulting in increased morbidity. Initiation of appropriate therapy could alter the natural course of the disease and prevent end-stage lung fibrosis [61]. Furthermore, the occurrence of AAS in ABPA and ABPA in AAS should always be investigated [186, 215].

References

- 1 Shah A. Allergic bronchopulmonary aspergillosis. *Indian J Chest Dis Allied Sci* 1998; 40: 41–54.
- 2 de Shazo RD, Chapin K, Swain RE. Fungal sinusitis. *N Engl J Med* 1997; 337: 254–259.
- 3 Hinson KFW, Moon AJ, Plummer NS. Bronchopulmonary aspergillosis: a review and a report of eight new cases. *Thorax* 1952; 7: 317–333.
- 4 Shah A, Panjabi C. Allergic bronchopulmonary aspergillosis: a review of a disease with a worldwide distribution. *J Asthma* 2002; 39: 273–289.
- 5 Longbottom JL, Pepys J. Pulmonary aspergillosis, diagnostic and immunological significance of antigens and C-reactive substance in *Aspergillus fumigatus*. *J Pathol Bacteriol* 1964; 88: 141–151.
- 6 Hendrick DJ, Davies RJ, D'Souza MF, et al. An analysis of skin prick test reactions in 656 asthmatic patients. *Thorax* 1975; 30: 2–8.
- 7 Schwartz HJ, Citron KM, Chester EH, et al. A comparison of the prevalence of sensitization to *Aspergillus* antigens among asthmatics in Cleveland and London. *J Allergy Clin Immunol* 1978; 62: 9–14.
- 8 Maurya V, Gugrani SC, Sarma PU, et al. Sensitization to *Aspergillus* antigens and occurrence of allergic bronchopulmonary aspergillosis in patients with asthma. *Chest* 2005; 127: 1252–1259.
- 9 Fairs A, Agbetile J, Hargadon B, et al. IgE sensitisation to *Aspergillus fumigatus* is associated with reduced lung function in asthma. *Am J Respir Crit Care Med* 2010; 182: 1362–1368.
- 10 Menzies D, Holmes L, McCumesky G, et al. *Aspergillus* sensitization is associated with airflow limitation and bronchiectasis in severe asthma. *Allergy* 2011; 66: 679–685.
- 11 Agarwal R, Noel V, Aggarwal AN, et al. Clinical significance of *Aspergillus* sensitisation in bronchial asthma. *Mycoses* 2011; 54: e531–e538.
- 12 Agbetile J, Fairs A, Desai D, et al. Isolation of filamentous fungi from sputum in asthma is associated with reduced post-bronchodilator FEV1. *Clin Exp Allergy* 2012; 42: 782–791.
- 13 Zureik M, Neukirch C, Leynaert B, et al. Sensitisation to airborne moulds and severity of asthma: cross sectional study from European Community respiratory health survey. *Br Med J* 2002; 325: 411–414.
- 14 Kauffman HF, van der Heide S. Exposure, sensitization, and mechanisms of fungus-induced asthma. *Curr Allergy Asthma Rep* 2003; 3: 430–437.
- 15 Denning DW, O'Driscoll BR, Hogaboam CM, et al. The link between fungi and severe asthma: a summary of the evidence. *Eur Respir J* 2006; 27: 615–626.
- 16 Denning DW, O'Driscoll BR, Powell G, et al. Randomized controlled trial of oral antifungal treatment for severe asthma with fungal sensitization: the Fungal Asthma Sensitization Trial (FAST) study. *Am J Respir Crit Care Med* 2009; 179: 11–18.
- 17 Pasqualotto AC, Powell G, Niven R, et al. The effects of antifungal therapy on severe asthma with fungal sensitization and allergic bronchopulmonary aspergillosis. *Respirology* 2009; 14: 1121–1127.
- 18 Greenberger PA. When to suspect and work up allergic bronchopulmonary aspergillosis. *Ann Allergy Asthma Immunol* 2013; 111: 1–4.
- 19 Greenberger PA. Allergic bronchopulmonary aspergillosis. *J Allergy Clin Immunol* 2002; 110: 685–692.
- 20 Patterson R. Allergic bronchopulmonary aspergillosis and hypersensitivity reactions to fungi. In: Fishman AP, Elias JA, Fishman JA, et al., eds. *Fishman's Pulmonary Diseases and Disorders*. 3rd Edn. Vol. 1. New York, McGraw-Hill & Co., 1998; pp. 777–782.
- 21 Kramer MN, Kurup VP, Fink JN. Allergic bronchopulmonary aspergillosis from a contaminated dump site. *Am Rev Respir Dis* 1989; 140: 1086–1088.
- 22 Allmers H, Huber H, Baur X. Two year follow-up of a garbage collector with allergic bronchopulmonary aspergillosis (ABPA). *Am J Ind Med* 2000; 37: 438–442.
- 23 Graves TS, Fink JN, Patterson R, et al. A familial occurrence of allergic bronchopulmonary aspergillosis. *Ann Intern Med* 1979; 91: 378–382.
- 24 Shah A, Khan ZU, Chaturvedi S, et al. Concurrent allergic *Aspergillus* sinusitis and allergic bronchopulmonary aspergillosis associated with familial occurrence of allergic bronchopulmonary aspergillosis. *Ann Allergy* 1990; 64: 507–512.
- 25 Shah A, Kala J, Sahay S, et al. Frequency of familial occurrence in 164 patients with allergic bronchopulmonary aspergillosis. *Ann Allergy Asthma Immunol* 2008; 101: 363–369.

- 26 Wark P. Pathogenesis of allergic bronchopulmonary aspergillosis and an evidence-based review of azoles in treatment. *Respir Med* 2004; 98: 915–923.
- 27 Bhatnagar PK, Banerjee B, Shah A, *et al.* Probable role of IgG subclasses in patients with allergic bronchopulmonary aspergillosis. *Serodiagn Immunother Infect Dis* 1993; 5: 123–124.
- 28 Kurup VP. Immunology of allergic bronchopulmonary aspergillosis. *Indian J Chest Dis Allied Sci* 2000; 42: 225–237.
- 29 Kauffman HF, Tomée JFC, Vander Werf TS, *et al.* Review of fungus induced asthmatic reactions. *Am J Respir Crit Care Med* 1995; 151: 2109–2116.
- 30 Wark PAB, Gibson PG. Allergic bronchopulmonary aspergillosis: new concepts of pathogenesis and treatment. *Respirology* 2001; 6: 1–7.
- 31 Madan T, Banerjee B, Bhatnagar PK, *et al.* Identification of 45 kD antigen in immune complexes of patients of allergic bronchopulmonary aspergillosis. *Mol Cell Biochem* 1997; 166: 111–116.
- 32 Purkayastha S, Madan T, Shah A, *et al.* Multifunctional antigens of *Aspergillus fumigatus* and specific antibodies. *Appl Biochem Biotech* 2000; 83: 271–286.
- 33 Chauhan B, Knutsen A, Hutcheson PS, *et al.* T cell subsets, epitope mapping, and HLA-restriction in patients with allergic bronchopulmonary aspergillosis. *J Clin Invest* 1996; 97: 2324–2331.
- 34 Chauhan B, Santiago L, Kirschmann DA, *et al.* The association of HLADR alleles and T cell activation with allergic bronchopulmonary aspergillosis. *J Immunol* 1997; 159: 4072–4076.
- 35 Chauhan B, Santiago L, Hutcheson PS, *et al.* Evidence for the involvement of two different MHC class II regions in susceptibility or protection in allergic bronchopulmonary aspergillosis. *J Allergy Clin Immunol* 2000; 106: 723–729.
- 36 Miller PW, Hamosh A, Macek M Jr, *et al.* Cystic fibrosis transmembrane conductance regulator (CFTR) gene mutations in allergic bronchopulmonary aspergillosis. *Am J Hum Genet* 1996; 59: 45–51.
- 37 Marchand E, Verellen-Dumoulin C, Mairesse M, *et al.* Frequency of cystic fibrosis transmembrane conductance regulator gene mutations and 5T allele in patients with allergic bronchopulmonary aspergillosis. *Chest* 2001; 119: 762–767.
- 38 Eaton TE, Weiner Miller P, Garrett JE, *et al.* Cystic fibrosis transmembrane conductance regulator gene mutations: do they play a role in the aetiology of allergic bronchopulmonary aspergillosis? *Clin Exp Allergy* 2002; 32: 756–761.
- 39 Lebecque P, Pepermans X, Marchand E, *et al.* ABPA in adulthood: a CFTR-related disorder. *Thorax* 2011; 66: 540–541.
- 40 de Almeida MB, Bussamra MH, Rodrigues JC. Allergic bronchopulmonary aspergillosis in paediatric cystic fibrosis patients. *Paediatr Respir Rev* 2006; 7: 67–72.
- 41 Madan T, Kishore U, Shah A, *et al.* Lung surfactant proteins A and D can inhibit specific IgE binding to the allergens of *Aspergillus fumigatus* and block allergen-induced histamine release from human basophils. *Clin Exp Immunol* 1997; 110: 241–249.
- 42 Madan T. Potential of lung surfactant proteins, SP-A and SP-D, and mannan binding lectin for therapy and genetic predisposition to allergic and invasive aspergillosis. *Recent Pat Inflamm Allergy Drug Discov* 2007; 1: 183–187.
- 43 Saxena S, Madan T, Shah A, *et al.* Association of polymorphisms in the collagen region of SPA2 with increased levels of total IgE antibodies and eosinophilia in patients with allergic bronchopulmonary aspergillosis. *J Allergy Clin Immunol* 2003; 111: 1001–1007.
- 44 Vaid M, Kaur S, Sambatakou H, *et al.* Distinct alleles of mannose-binding lectin (MBL) and surfactant proteins A (SP-A) in patients with chronic cavitary pulmonary aspergillosis and allergic bronchopulmonary aspergillosis. *Clin Chem Lab Med* 2007; 45: 183–186.
- 45 Knutsen AP, Kariuki B, Consolino JD, *et al.* IL-4 alpha chain receptor (IL-4Ralpha) polymorphisms in allergic bronchopulmonary aspergillosis. *Clin Mol Allergy* 2006; 4: 3.
- 46 Brouard J, Knauer N, Boelle PY, *et al.* Influence of interleukin-10 on *Aspergillus fumigatus* infection in patients with cystic fibrosis. *J Infect Dis* 2005; 191: 1988–1991.
- 47 Sambatakou H, Pravica V, Hutchinson IV, *et al.* Cytokine profiling of pulmonary aspergillosis. *Int J Immunogenet* 2006; 33: 297–302.
- 48 Kaur S, Gupta VK, Shah A, *et al.* Plasma mannan-binding lectin levels and activity are increased in allergic patients. *J Allergy Clin Immunol* 2005; 116: 1381–1383.
- 49 Kaur S, Gupta VK, Shah A, *et al.* Elevated levels of mannan-binding lectin (MBL) and eosinophilia in patients of bronchial asthma with allergic rhinitis and allergic bronchopulmonary aspergillosis associate with a novel intronic polymorphism in MBL. *Clin Exp Immunol* 2006; 143: 414–419.
- 50 Carvalho A, Pasqualotto AC, Pitzurra L, *et al.* Polymorphisms in toll-like receptor genes and susceptibility to pulmonary aspergillosis. *J Infect Dis* 2008; 197: 618–621.
- 51 Madan T, Priyadarsiny P, Vaid M, *et al.* Use of a synthetic peptide epitope of Asp f 1, a major allergen or antigen of *Aspergillus fumigatus*, for improved immunodiagnosis of allergic bronchopulmonary aspergillosis. *Clin Diagn Lab Immunol* 2004; 11: 552–558.
- 52 Gautam P, Sundaram CS, Madan T, *et al.* Identification of novel allergens of *Aspergillus fumigatus* using immunoproteomics approach. *Clin Exp Allergy* 2007; 37: 1239–1249.
- 53 Shah A. Allergic bronchopulmonary aspergillosis: a view from India. *Saudi Med J* 2002; 23: 1559–1561.
- 54 Novey HS. Epidemiology of allergic bronchopulmonary aspergillosis. *Immunol Allergy Clin North Am* 1998; 18: 641–653.
- 55 Henderson AH, English MP, Vecht RJ. Pulmonary aspergillosis: a survey of its occurrence in patients with chronic lung disease and a discussion of the significance of diagnostic tests. *Thorax* 1968; 23: 513–518.
- 56 Adiseshan N, Simpson J, Gandevia B. The association of asthma with *Aspergillus* and other fungi. *Aust N Z J Med* 1971; 4: 385–391.
- 57 Patterson R, Golbert TM. Hypersensitivity disease of the lung. *Univ Mich Med Cent J* 1968; 34: 8–11.
- 58 Greenberger PA, Patterson R. Allergic bronchopulmonary aspergillosis and the evaluation of the patient with asthma. *J Allergy Clin Immunol* 1988; 81: 646–650.
- 59 Schwartz HJ, Greenberger PA. The prevalence of allergic bronchopulmonary aspergillosis in patients with asthma, determined by serologic and radiologic criteria in patients at risk. *J Lab Clin Med* 1991; 117: 138–142.
- 60 Eaton T, Garrett J, Milne D, *et al.* Allergic bronchopulmonary aspergillosis in the asthma clinic: a prospective evaluation of CT in the diagnostic algorithm. *Chest* 2000; 118: 66–72.

- 61 Greenberger PA. Allergic bronchopulmonary aspergillosis. In: Middleton E Jr, Reed CE, Ellis EF, *et al.*, eds. *Allergy: Principles and Practice*. 5th Edn. St. Louis, CV Mosby Co, 1998; pp. 981–993.
- 62 Stevens DA, Moss RB, Kurup VP, *et al.* Allergic bronchopulmonary aspergillosis in cystic fibrosis – state of the art: Cystic Fibrosis Foundation Consensus Conference. *Clin Infect Dis* 2003; 37: Suppl. 3, S225–S264.
- 63 Denning DW, Pleuvry A, Cole DC. Global burden of allergic bronchopulmonary aspergillosis with asthma and its complication chronic pulmonary aspergillosis in adults. *Med Mycol* 2013; 51: 361–370.
- 64 Benatar SR, Keen GA, Du Toit Naude W. *Aspergillus* hypersensitivity in asthmatics in Cape Town. *Clin Allergy* 1980; 10: 285–291.
- 65 Donnelly SC, McLaughlin H, Bredin CP. Period prevalence of allergic bronchopulmonary mycosis in a regional hospital outpatient population in Ireland 1985–88. *Ir J Med Sci* 1991; 160: 288–290.
- 66 Al-Mobeireek AF, El-Rab Mogad, Al-Hedaithy SS, *et al.* Allergic bronchopulmonary mycosis in patients with asthma: period prevalence at a university hospital in Saudi Arabia. *Respir Med* 2001; 95: 341–347.
- 67 Ma YL, Zhang WB, Yu B, *et al.* Prevalence of allergic bronchopulmonary aspergillosis in Chinese patients with bronchial asthma. *Zhonghua Jie He He Hu Xi Za Zhi* 2011; 34: 909–913.
- 68 Agarwal R, Chakrabarti A, Shah A, *et al.* Allergic bronchopulmonary aspergillosis: review of literature and proposal of new diagnostic and classification criteria. *Clin Exp Allergy* 2013; 43: 850–873.
- 69 Agarwal R, Gupta D, Aggarwal AN, *et al.* Clinical significance of hyperattenuating mucoid impaction in allergic bronchopulmonary aspergillosis: an analysis of 155 patients. *Chest* 2007; 132: 1183–1190.
- 70 Prasad R, Garg R, Sanjay, *et al.* A study on prevalence of allergic bronchopulmonary aspergillosis in patients of bronchial asthma. *Internet J Pulm Med* 2008; 9: DOI: 10.5580/1418.
- 71 Sarkar A, Mukherjee A, Ghoshal AG, *et al.* Occurrence of allergic bronchopulmonary mycosis in patients with asthma: an Eastern India experience. *Lung India* 2010; 27: 212–216.
- 72 Ghosh T, Dey A, Biswas D, *et al.* *Aspergillus* hypersensitivity and allergic bronchopulmonary aspergillosis among asthma patients in eastern India. *J Indian Med Assoc* 2010; 108: 863–865.
- 73 Rosenberg M, Patterson R, Mintzer R, *et al.* Clinical and immunologic criteria for the diagnosis of allergic bronchopulmonary aspergillosis. *Ann Intern Med* 1977; 86: 405–414.
- 74 Wang JLF, Patterson R, Rosenberg M, *et al.* Serum IgE and IgG antibody activity against *Aspergillus fumigatus* as a diagnostic aid in allergic bronchopulmonary aspergillosis. *Am Rev Respir Dis* 1978; 117: 917–927.
- 75 Shah A. Allergic bronchopulmonary aspergillosis: an emerging disease in India. *Indian J Chest Dis Allied Sci* 1994; 36: 169–172.
- 76 Scadding JG. The bronchi in allergic aspergillosis. *Scand J Respir Dis* 1967; 48: 372–377.
- 77 Patterson R, Greenberger PA, Halwig JM, *et al.* Allergic bronchopulmonary aspergillosis: natural history and classification of early disease by serologic and roentgenographic studies. *Arch Intern Med* 1986; 146: 916–918.
- 78 Glancy JJ, Elder JL, McAleer R. Allergic bronchopulmonary fungal disease without clinical asthma. *Thorax* 1981; 36: 345–349.
- 79 Berkin KE, Vernon DRH, Kerr JW. Lung collapse caused by allergic bronchopulmonary aspergillosis in non-asthmatic patients. *Br Med J* 1982; 285: 552–553.
- 80 Hoshino H, Tagaki S, Kon H, *et al.* Allergic bronchopulmonary aspergillosis due to *Aspergillus niger* without bronchial asthma. *Respiration* 1999; 66: 369–372.
- 81 Sanchez-Alarcos JMF, Martinez-Cruz R, Ortega L, *et al.* ABPA mimicking bronchogenic cancer. *Allergy* 2001; 56: 80–81.
- 82 Shah A, Maurya V, Panjabi C, *et al.* Allergic bronchopulmonary aspergillosis without clinical asthma caused by *Aspergillus niger*. *Allergy* 2004; 59: 236–237.
- 83 Koh WJ, Han J, Kim TS, *et al.* Allergic bronchopulmonary aspergillosis coupled with broncholithiasis in a non-asthmatic patient. *J Korean Med Sci* 2007; 22: 365–368.
- 84 Ricketti AJ, Greenberger PA, Patterson R. Immediate-type reactions in patients with allergic bronchopulmonary aspergillosis. *J Allergy Clin Immunol* 1983; 71: 541–545.
- 85 Shah A, Bhagat R, Panchal N. Allergic bronchopulmonary aspergillosis with clubbing and cavitation. *Indian Pediatr* 1993; 30: 248–251.
- 86 Shah A, Kala J, Sahay S. Allergic bronchopulmonary aspergillosis with hilar adenopathy in a 42-month-old boy. *Pediatr Pulmonol* 2007; 42: 747–748.
- 87 Imbeau SA, Cohen M, Reed CE. Allergic bronchopulmonary aspergillosis in infants. *Am J Dis Child* 1977; 131: 1127–1130.
- 88 Shah A. Allergic bronchopulmonary aspergillosis: an Indian perspective. *Curr Opin Pulm Med* 2007; 13: 72–80.
- 89 McCarthy DS, Pepys J. Allergic bronchopulmonary aspergillosis. Clinical immunology: 1. Clinical features. *Clin Allergy* 1971; 1: 261–286.
- 90 Safirstein BH, D’Souza MF, Simon G, *et al.* Five year follow up of bronchopulmonary aspergillosis. *Am Rev Respir Dis* 1973; 108: 450–459.
- 91 Shah A, Panchal N, Panjabi C. Allergic bronchopulmonary aspergillosis: a review from India. *Allergy Clin Immunol Int J World Allergy Org* 2003; Suppl. 1, 104.
- 92 Shah A. Allergic bronchopulmonary aspergillosis. *Allergy Clin Immunol Int J World Allergy Org* 2005; 17: 172–180.
- 93 Panchal N, Bhagat R, Pant C, *et al.* Allergic bronchopulmonary aspergillosis: the spectrum of computed tomography appearances. *Respir Med* 1997; 91: 213–219.
- 94 Shah A, Panchal N, Agarwal AK. Allergic bronchopulmonary aspergillosis: the spectrum of roentgenologic appearances. *Indian J Radiol Imag* 1999; 9: 107–112.
- 95 McCarthy DS, Simon G, Hargeave FE. The radiological appearances in allergic bronchopulmonary aspergillosis. *Clin Radiol* 1970; 21: 366–375.
- 96 Mintzer RA, Roger LF, Kruglik GD. The spectrum of radiologic findings in allergic bronchopulmonary aspergillosis. *Radiology* 1978; 127: 301–307.
- 97 Phelan MS, Kerr IH. Allergic bronchopulmonary aspergillosis: the radiological appearances during long-term follow up. *Clin Radiol* 1984; 35: 385–392.
- 98 Shah A. Allergic bronchopulmonary and sinus aspergillosis: the roentgenologic spectrum. *Front Biosci* 2003; 8: e138–e146.
- 99 Hantsch CE, Tanus T. Allergic bronchopulmonary aspergillosis with adenopathy. *Ann Intern Med* 1991; 115: 546–547.

- 100 Shah A, Aggarwal AK, Chugh IM. Hilar adenopathy in allergic bronchopulmonary aspergillosis. *Ann Allergy Asthma Immunol* 1999; 82: 504–506.
- 101 Shah A, Bhagat R, Panchal N, et al. Allergic bronchopulmonary aspergillosis with middle lobe syndrome and allergic *Aspergillus* sinusitis. *Eur Respir J* 1993; 6: 917–918.
- 102 Greenberger PA, Patterson R. Allergic bronchopulmonary aspergillosis. Model of bronchopulmonary disease with defined serologic, radiologic, pathologic and clinical findings from asthma to fatal destructive lung disease. *Chest* 1987; 91: Suppl. 6, 165S–171S.
- 103 Panchal N, Pant CS, Bhagat R, et al. Central bronchiectasis in allergic bronchopulmonary aspergillosis: comparative evaluation of computed tomography of the thorax with bronchography. *Eur Respir J* 1994; 7: 1290–1293.
- 104 Fisher MR, Mendelson EB, Mintzer RA, et al. Use of linear tomography to confirm the diagnosis of allergic bronchopulmonary aspergillosis. *Chest* 1985; 87: 499–502.
- 105 Shah A, Pant CS, Bhagat R, et al. Computed tomography in childhood allergic bronchopulmonary aspergillosis. *Pediatr Radiol* 1992; 22: 227–228.
- 106 Webb WR, Muller NL, Naidich DP, eds. High-resolution CT of the Lung. 2nd Edn. New York, Lippincott Williams and Wilkins, 1996; pp. 257–258.
- 107 Mitchell TAM, Hamilos DL, Lynch DA, et al. Distribution and severity of bronchiectasis in allergic bronchopulmonary aspergillosis (ABPA). *J Asthma* 2000; 37: 65–72.
- 108 Hansell DM, Strickland B. High-resolution computed tomography in pulmonary cystic fibrosis. *Br J Radiol* 1989; 62: 1–5.
- 109 Shah A, Khan ZU, Chaturvedi S, et al. Allergic bronchopulmonary aspergillosis with co-existent aspergilloma: a long term follow up. *J Asthma* 1989; 26: 109–115.
- 110 Agarwal AK, Bhagat R, Panchal N, et al. Allergic bronchopulmonary aspergillosis with aspergilloma mimicking fibrocavitary pulmonary tuberculosis. *Asian Pac J Allergy Immunol* 1996; 14: 5–8.
- 111 Goyal R, White CS, Templeton PA, et al. High attenuation mucous plugs in allergic bronchopulmonary aspergillosis: CT appearance. *J Comput Assist Tomogr* 1992; 16: 649–650.
- 112 Murphy D, Lane DJ. Pleural effusion in allergic bronchopulmonary aspergillosis: two case reports. *Br J Dis Chest* 1981; 75: 91–95.
- 113 Bhagat R, Shah A, Jaggi OP, et al. Concomitant allergic bronchopulmonary aspergillosis and allergic *Aspergillus* sinusitis with an operated aspergilloma. *J Allergy Clin Immunol* 1993; 91: 1094–1096.
- 114 O'Connor TM, O'Donnell A, Hurley M, et al. Allergic bronchopulmonary aspergillosis: a rare cause of pleural effusion. *Respirology* 2001; 6: 361–363.
- 115 Ricketti AJ, Greenberger PA, Glassroth J. Spontaneous pneumothorax in allergic bronchopulmonary aspergillosis. *Arch Intern Med* 1984; 144: 151–152.
- 116 Judson MA, Marshall C, Beale G, et al. Pneumothorax and bronchopleural fistula during treatment of allergic bronchopulmonary aspergillosis. *South Med J* 1993; 86: 1061–1063.
- 117 Lynch DA. Imaging of asthma and allergic bronchopulmonary mycosis. *Radiol Clin North Am* 1998; 36: 129–142.
- 118 Angus RM, Davies ML, Cowan MD, et al. Computed tomographic scanning of the lung in patients with allergic bronchopulmonary aspergillosis and in asthmatic patients with a positive skin test to *Aspergillus fumigatus*. *Thorax* 1994; 49: 586–589.
- 119 Knutsen AP, Bush RK, Demain JG, et al. Fungi and allergic lower respiratory tract diseases. *J Allergy Clin Immunol* 2012; 129: 280–291.
- 120 Agarwal R, Aggarwal AN, Gupta D, et al. *Aspergillus* hypersensitivity and allergic bronchopulmonary aspergillosis in patients with bronchial asthma: systematic review and meta-analysis. *Int J Tuberc Lung Dis* 2009; 13: 936–944.
- 121 Hutcheson PS, Knutsen AP, Regent AJ, et al. A twelve year longitudinal study of *Aspergillus* sensitivity in patients with cystic fibrosis. *Chest* 1996; 110: 363–366.
- 122 Nikolaizik WH, Cramer R, Blaser K, et al. Skin test reactivity to recombinant *Aspergillus fumigatus* allergen I/a in patients with cystic fibrosis. *Int Arch Allergy Immunol* 1996; 111: 403–408.
- 123 Nikolaizik WH, Weichel M, Blaser K, et al. Intracutaneous tests with recombinant allergens in cystic fibrosis patients with allergic bronchopulmonary aspergillosis and *Aspergillus* allergy. *Am J Respir Crit Care Med* 2002; 165: 916–921.
- 124 Patterson R, Roberts M. IgE and IgG antibodies against *Aspergillus fumigatus* in sera of patients with bronchopulmonary allergic aspergillosis. *Int Arch Allergy* 1974; 46: 150–160.
- 125 Brummund W, Resnick A, Fink JM, et al. *Aspergillus fumigatus*-specific antibodies in allergic bronchopulmonary aspergillosis and aspergilloma: evidence for a polyclonal antibody response. *J Clin Microbiol* 1987; 25: 5–9.
- 126 Cramer R, Hemmann S, Ismail C, et al. Disease-specific recombinant allergens for the diagnosis of allergic bronchopulmonary aspergillosis. *Int Immunol* 1998; 10: 1211–1216.
- 127 Kurup VP, Banerjee B, Hemmann S, et al. Selected recombinant *Aspergillus fumigatus* allergens bind specifically to IgE in ABPA. *Clin Exp Allergy* 2000; 30: 988–993.
- 128 Hemmann S, Nikolaizik WH, Schoni MH, et al. Differential IgE recognition of recombinant *Aspergillus fumigatus* allergens by cystic fibrosis patients with allergic bronchopulmonary aspergillosis or *Aspergillus* allergy. *Eur J Biochem* 1998; 28: 1155–1160.
- 129 Knutsen AP, Hutcheson PS, Slavin RG, et al. IgE antibody to *Aspergillus fumigatus* recombinant allergens in cystic fibrosis patients with allergic bronchopulmonary aspergillosis. *Allergy* 2004; 59: 198–203.
- 130 Greenberger PA, Miller TP, Roberts M, et al. Allergic bronchopulmonary aspergillosis in patients with and without evidence of bronchiectasis. *Ann Allergy* 1993; 70: 333–338.
- 131 Wark PA, Saltos N, Simpson J, et al. Induced sputum eosinophils and neutrophils and bronchiectasis severity in allergic bronchopulmonary aspergillosis. *Eur Respir J* 2000; 16: 1095–1101.
- 132 Ouchterlony Ö. Diffusion-in-gel methods for immunological analysis. *Prog Allergy* 1958; 5: 1–78.
- 133 Denning DW. Chronic forms of pulmonary aspergillosis. *Clin Microbiol Infect* 2001; 7: Suppl. 2, 25–31.
- 134 Denning DW, Riniotis K, Dobrashian R, et al. Chronic cavitary and fibrosing pulmonary and pleural aspergillosis: case series, proposed nomenclature change, and review. *Clin Infect Dis* 2003; 37: Suppl. 3, S265–S280.
- 135 Denning DW, Park S, Lass-Flörl C, et al. High-frequency triazole resistance found in nonculturable *Aspergillus fumigatus* from lungs of patients with chronic fungal disease. *Clin Infect Dis* 2011; 52: 1123–1129.
- 136 Nichols D, Dopico GA, Braun S, et al. Acute and chronic pulmonary function changes in allergic bronchopulmonary aspergillosis. *Am J Med* 1979; 67: 631–637.

- 137 Panjabi C, Shah A. Lung functions in allergic bronchopulmonary aspergillosis. *Respirology* 2006; 11: A38.
- 138 Patterson R, Greenberger PA, Radin RC, *et al.* Allergic bronchopulmonary aspergillosis: staging as an aid to management. *Ann Intern Med* 1982; 96: 286–291.
- 139 Greenberger PA, Patterson R. Diagnosis and management of allergic bronchopulmonary aspergillosis. *Ann Allergy* 1986; 56: 444–448.
- 140 Shah A, Bhagat R, Pant K, *et al.* Allergic bronchopulmonary aspergillosis with aspergilloma: exacerbation after prolonged remission. *Indian J Tuberc* 1993; 40: 39–41.
- 141 Ramachandran S, Shah A, Pant K, *et al.* Allergic bronchopulmonary aspergillosis and *Candida albicans* colonization of the respiratory tract in corticosteroid dependent asthma. *Asian Pac J Allergy Immunol* 1990; 8: 123–126.
- 142 Agarwal R, Khan A, Gupta D, *et al.* An alternate method of classifying allergic bronchopulmonary aspergillosis based on high-attenuation mucus. *PLoS One* 2010; 5: e15346.
- 143 Fink JN. Therapy of allergic bronchopulmonary aspergillosis. *Indian J Chest Dis Allied Sci* 2000; 42: 221–224.
- 144 Rosenberg M, Patterson R, Roberts M, *et al.* The assessment of immunologic and clinical changes occurring during corticosteroid therapy for allergic bronchopulmonary aspergillosis. *Am J Med* 1978; 64: 599–606.
- 145 Wang JLF, Patterson R, Roberts M, *et al.* The management of allergic bronchopulmonary aspergillosis. *Am Rev Respir Dis* 1979; 120: 87–92.
- 146 Vlahakis NE, Aksamit TR. Diagnosis and treatment of allergic bronchopulmonary aspergillosis. *Mayo Clin Proc* 2001; 76: 930–938.
- 147 Agarwal R, Gupta D, Aggarwal AN, *et al.* Allergic bronchopulmonary aspergillosis: lessons from 126 patients attending a chest clinic in north India. *Chest* 2006; 130: 442–448.
- 148 Patterson K, Strek ME. Allergic bronchopulmonary aspergillosis. *Proc Am Thorac Soc* 2010; 7: 237–244.
- 149 Shah A, Panjabi C. Biweekly therapy with prednisolone is effective in the management of allergic bronchopulmonary aspergillosis. *Allergy Clin Immunol Int - J World Allergy Org*, 2005: Suppl. 1, 113.
- 150 Skowronski E, Fitzgerald DA. Life-threatening allergic bronchopulmonary aspergillosis in a well child with cystic fibrosis. *Med J Aust* 2005; 182: 482–483.
- 151 Thomson JM, Wesley A, Byrnes CA, *et al.* Pulse intravenous methylprednisolone for resistant allergic bronchopulmonary aspergillosis in cystic fibrosis. *Pediatr Pulmonol* 2006; 41: 164–170.
- 152 Cohen-Cymbarknoh M, Blau H, Shoseyov D, *et al.* Intravenous monthly pulse methylprednisolone treatment for ABPA in patients with cystic fibrosis. *J Cyst Fibros* 2009; 8: 253–257.
- 153 Malo JL. Antifungal therapy for allergic bronchopulmonary aspergillosis. *J Allergy Clin Immunol* 2003; 111: 934–935.
- 154 Leon EE, Craig TJ. Antifungals in the treatment of allergic bronchopulmonary aspergillosis. *Ann Allergy Asthma Immunol* 1999; 82: 511–517.
- 155 Stevens DA, Schwartz HJ, Lee JY, *et al.* A randomized trial of itraconazole in allergic bronchopulmonary aspergillosis. *N Engl J Med* 2000; 342: 756–762.
- 156 Wark PA, Hensley MJ, Saltos N, *et al.* Anti-inflammatory effect of itraconazole in stable allergic bronchopulmonary aspergillosis: a randomized controlled trial. *J Allergy Clin Immunol* 2003; 111: 952–957.
- 157 Pasqualotto AC, Denning DW. Generic substitution of itraconazole resulting in sub-therapeutic levels and resistance. *Int J Antimicrob Agents* 2007; 30: 93–94.
- 158 Howard SJ, Cerar D, Anderson MJ, *et al.* Frequency and evolution of azole resistance in *Aspergillus fumigatus* associated with treatment failure. *Emerg Infect Dis* 2009; 15: 1068–1076.
- 159 Howard SJ, Pasqualotto AC, Denning DW. Azole resistance in allergic bronchopulmonary aspergillosis and *Aspergillus* bronchitis. *Clin Microbiol Infect* 2010; 16: 683–688.
- 160 Hilliard T, Edwards S, Buchdahl R, *et al.* Voriconazole therapy in children with cystic fibrosis. *J Cyst Fibros* 2005; 4: 215–220.
- 161 Mulliez P, Croxo C, Roy-Saint Georges F, *et al.* Aspergillose broncho-pulmonaire allergique traitée par voriconazole [Allergic broncho-pulmonary aspergillosis treated with voriconazole]. *Rev Mal Respir* 2006; 23: 93–94.
- 162 Bandres Gimeno R, Munoz Martinez MJ. Respuesta terapéutica prolongada a voriconazol en un caso de broncoaspergilosis alérgica [Prolonged therapeutic response to voriconazole in a case of allergic bronchopulmonary aspergillosis]. *Arch Bronconeumol* 2007; 43: 49–51.
- 163 Erwin GE, Fitzgerald JE. Case report: allergic bronchopulmonary aspergillosis and allergic fungal sinusitis successfully treated with voriconazole. *J Asthma* 2007; 44: 891–895.
- 164 Chishimba L, Niven RM, Cooley J, *et al.* Voriconazole and posaconazole improve asthma severity in allergic bronchopulmonary aspergillosis and severe asthma with fungal sensitization. *J Asthma* 2012; 49: 423–433.
- 165 Clancy CJ, Nguyen MH. Long-term voriconazole and skin cancer: is there cause for concern? *Curr Infect Dis Rep* 2011; 13: 536–543.
- 166 van der Ent CK, Hoekstra H, Rijkers GT. Successful treatment of allergic bronchopulmonary aspergillosis with recombinant anti-IgE antibody. *Thorax* 2007; 62: 276–277.
- 167 Zirbes JM, Milla CE. Steroid-sparing effect of omalizumab for allergic bronchopulmonary aspergillosis and cystic fibrosis. *Pediatr Pulmonol* 2008; 43: 607–610.
- 168 Kanu A, Patel K. Treatment of allergic bronchopulmonary aspergillosis (ABPA) in CF with anti-IgE antibody (omalizumab). *Pediatr Pulmonol* 2008; 43: 1249–1251.
- 169 Perez-de-Llano LA, Vennera MC, Parra A, *et al.* Effects of omalizumab in *Aspergillus*-associated airway disease. *Thorax* 2011; 66: 539–540.
- 170 Tillie-Leblond I, Germaud P, Leroyer C, *et al.* Allergic bronchopulmonary aspergillosis and omalizumab. *Allergy* 2011; 66: 1254–1256.
- 171 Collins J, Devos G, Hudes G, *et al.* Allergic bronchopulmonary aspergillosis treated successfully for one year with omalizumab. *J Asthma Allergy* 2012; 5: 65–70.
- 172 Nepomuceno IB, Esrig S, Moss RB. Allergic bronchopulmonary aspergillosis in cystic fibrosis: role of atopy and response to itraconazole. *Chest* 1999; 115: 364–370.
- 173 Mastella G, Rainisio M, Harms HK, *et al.* Allergic bronchopulmonary aspergillosis in cystic fibrosis. A European epidemiological study. *Eur Respir J* 2000; 16: 464–471.
- 174 Geller DE, Kaplowitz H, Light MJ, *et al.* Allergic bronchopulmonary aspergillosis in cystic fibrosis. Reported prevalence, regional distribution, and patient characteristics. *Chest* 1999; 116: 639–646.

- 175 Agarwal R, Hazarika B, Gupta D, *et al.* *Aspergillus* hypersensitivity in patients with chronic obstructive pulmonary disease: COPD as a risk factor for ABPA? *Med Mycol* 2010; 48: 988–994.
- 176 Mir E, Shah A. Allergic bronchopulmonary aspergillosis in a patient with chronic obstructive pulmonary disease. *Prim Care Respir J* 2012; 21: 111–114.
- 177 Eppinger TM, Greenberger PA, White DA, *et al.* Sensitization to *Aspergillus* species in the congenital neutrophil disorders chronic granulomatous disease and hyper-IgE syndrome. *J Allergy Clin Immunol* 1999; 104: 1265–1272.
- 178 Sharma B, Sharma M, Bondi E, *et al.* Kartagener's syndrome associated with allergic bronchopulmonary aspergillosis. *Med Gen Med* 2005; 7: 25.
- 179 Taylor RG, Joyce H, Gross E, *et al.* Bronchial reactivity to inhaled histamine and annual rate of decline in FEV1 in male smokers and ex-smokers. *Thorax* 1985; 40: 9–16.
- 180 Burrows B, Halonen M, Barbee RA, *et al.* The relationship of serum immunoglobulin E to cigarette smoking. *Am Rev Respir Dis* 1981; 124: 523–525.
- 181 Taylor RG, Gross E, Joyce H, *et al.* Smoking, allergy and the differential white blood cell count. *Thorax* 1985; 40: 17–22.
- 182 Brightling CE, Monteiro W, Ward R, *et al.* Sputum eosinophilia and short-term response to prednisolone in chronic obstructive pulmonary disease: a randomized controlled trial. *Lancet* 2000; 356: 1480–1485.
- 183 Dye JA, Adler KB. Effects of cigarette smoke on epithelial cells of the respiratory tract. *Thorax* 1994; 49: 825–834.
- 184 Patterson R. Allergic bronchopulmonary aspergillosis: a historical perspective. *Immunol Allergy Clin North Am* 1998; 18: 471–478.
- 185 Chowdhary A, Agarwal K, Kathuria S, *et al.* Allergic bronchopulmonary mycosis due to fungi other than *Aspergillus*: a global overview. *Crit Rev Microbiol* 2013 [In press DOI: 10.3109/1040841X.2012.754401].
- 186 Shah A, Panchal N, Agarwal AK. Concomitant allergic bronchopulmonary aspergillosis and allergic *Aspergillus* sinusitis: a review of an uncommon association. *Clin Exp Allergy* 2001; 31: 1896–1905.
- 187 Sharma P, Agarwal AK, Shah A. Formation of an aspergilloma in a patient with allergic bronchopulmonary aspergillosis on corticosteroid therapy. *Indian J Chest Dis Allied Sci* 1998; 40: 269–273.
- 188 Shah A, Panjabi C. Contemporaneous occurrence of allergic bronchopulmonary aspergillosis, allergic *Aspergillus* sinusitis, and aspergilloma. *Ann Allergy Asthma Immunol* 2006; 96: 874–878.
- 189 Katzenstein AL, Sale SR, Greenberger PA. Allergic *Aspergillus* sinusitis: a newly recognised form of sinusitis. *J Allergy Clin Immunol* 1983; 72: 89–93.
- 190 Shah A, Khan ZU, Sircar M, *et al.* Allergic *Aspergillus* sinusitis: an Indian report. *Respir Med* 1990; 84: 249–251.
- 191 Millar JW, Johnston A, Lamb D. Allergic aspergillosis of the maxillary sinuses. *Thorax* 1981; 36: 710.
- 192 Shah A, Sircar M. Sensitization to *Aspergillus* antigens in perennial rhinitis. *Asian Pac J Allergy Immunol* 1991; 9: 137–139.
- 193 Sahay S, Shah A. Allergic rhinitis: *Aspergillus* sensitisation increases the severity of sinusitis in “blockers” as compared to “sneezers and runners”. *Allergy* 2008; 63: 73.
- 194 Bartynski JM, McCaffrey TV, Frigas E. Allergic fungal sinusitis secondary to dematiaceous fungi: *Curvularia lunata* and *Alternaria*. *Otolaryngol Head Neck Surg* 1990; 103: 32–39.
- 195 Manning SC, Schaefer SD, Close LG, *et al.* Culture-positive allergic fungal sinusitis. *Arch Otolaryngol Head Neck Surg* 1991; 117: 174–178.
- 196 Corey JP, Delsupehe KG, Ferguson BJ. Allergic fungal sinusitis: allergic, infectious, or both? *Otolaryngol Head Neck Surg* 1995; 113: 110–119.
- 197 Schubert MS, Goetz DW. Evaluation and treatment of allergic fungal sinusitis. I. Demographics and diagnosis. *J Allergy Clin Immunol* 1998; 102: 387–394.
- 198 Mukherji SK, Figueroa RE, Ginsberg LE, *et al.* Allergic fungal sinusitis: CT findings. *Radiology* 1998; 207: 417–422.
- 199 Schubert MS. Allergic fungal sinusitis: pathogenesis and management strategies. *Drugs* 2004; 64: 363–374.
- 200 Sher TH, Schwartz HJ. Allergic *Aspergillus* sinusitis with concurrent allergic bronchopulmonary *Aspergillus*: report of a case. *J Allergy Clin Immunol* 1988; 81: 844–846.
- 201 Schwartz HJ, Witt WJ, Sher TH. Allergic bronchopulmonary aspergillosis and allergic aspergillus sinusitis: case report. *Ann Allergy* 1992; 69: 447–448.
- 202 Venarske DL, deShazo RD. Sinobronchial allergic mycosis: the SAM syndrome. *Chest* 2002; 121: 1670–1676.
- 203 Braun JJ, Pauli G, Schultz P, *et al.* Allergic fungal sinusitis associated with allergic bronchopulmonary aspergillosis: an uncommon sinobronchial allergic mycosis. *Am J Rhinol* 2007; 21: 412–416.
- 204 Prasad R, Garg R, Sanjay. Concomitant allergic bronchopulmonary aspergillosis and allergic fungal sinusitis. *Indian J Med Sci* 2007; 61: 532–534.
- 205 Diwakar A, Panjabi C, Shah A. Allergic bronchopulmonary aspergillosis, allergic *Aspergillus* sinusitis and their co-occurrence. *Open Allergy J* 2008; 1: 52–61.
- 206 Cody DT 2nd, Neel HB 3rd, Ferreiro JA, *et al.* Allergic fungal sinusitis: the Mayo clinic experience. *Laryngoscope* 1994; 104: 1074–1079.
- 207 Campbell JM, Graham M, Gray HC, *et al.* Allergic fungal sinusitis in children. *Ann Allergy Asthma Immunol* 2006; 96: 286–290.
- 208 Kurashima A. Analysis of the course of non-invasive pulmonary aspergillosis. *Jpn J Med Mycol* 1997; 38: 167–174.
- 209 McCarthy DS, Pepys J. Pulmonary aspergilloma: clinical immunology. *Clin Allergy* 1973; 3: 57–70.
- 210 Ein ME, Wallace RJ Jr, Williams TW. Allergic bronchopulmonary aspergillosis-like syndrome consequent to aspergilloma. *Am Rev Respir Dis* 1979; 119: 811–820.
- 211 Pendleton M, Denning DW. Multifocal pulmonary aspergillomas: case series and review. *Ann NY Acad Sci* 2012; 1272: 58–67.
- 212 Shah A. Concurrent allergic bronchopulmonary aspergillosis and aspergilloma: is it a more severe form of the disease? *Eur Respir Rev* 2010; 19: 261–263.
- 213 Agarwal R, Aggarwal AN, Garg M, *et al.* Allergic bronchopulmonary aspergillosis with aspergilloma: an immunologically severe disease with poor outcome. *Mycopathologia* 2012; 174: 193–201.
- 214 Shah A. Asthma and *Aspergillus*. *Indian J Chest Dis Allied Sci* 2004; 46: 167–170.
- 215 Panjabi C, Shah A. Allergic *Aspergillus* sinusitis and its association with allergic bronchopulmonary aspergillosis. *Asia Pac Allergy* 2011; 1: 130–137.