



## EUROPEAN RESPIRATORY UPDATE

# Update on diffuse parenchymal lung disease

S. Harari and A. Caminati

In recent years, there have been important advances in the understanding of diffuse parenchymal lung diseases, especially in relation to the idiopathic interstitial pneumonias, including idiopathic pulmonary fibrosis and nonspecific interstitial pneumonia. Among other diffuse parenchymal lung diseases, the topics of particular interest centred on hypersensitivity pneumonia, parenchymal disease associated with connective tissue disease, lymphangioleiomyomatosis and pulmonary hypertension. Insights on disease prevalence, diagnosis, prognostic evaluation, and management for the granulomatous diseases have not been discussed in this review.

### IDIOPATHIC PULMONARY FIBROSIS

#### Epidemiology

Idiopathic pulmonary fibrosis (IPF) is a devastating disease, with a 5-yr survival rate of only 20–30% following diagnosis. Pulmonary fibrosis remains a significant health problem whose true incidence and prevalence has been believed to be increasing in recent years. Using a database from the National Center for Health Statistics, OLSON *et al.* [1] clearly show for the first time that the mortality rates have increased from 1992 to 2003. Although these data do not confirm that the prevalence is increasing, they do suggest that there have been improvements in reporting and identification of fibrotic lung diseases. The age-adjusted mortality increased for both sexes, and the authors of this report suggest that this trend will continue. The most common cause of death in people with IPF is progression of their underlying lung disease, but there is evidence that the incidence of other diseases, such as lung cancer, may be increased in people with IPF [2–5]. This is interesting, because such associations may shed light on the aetiology and/or pathogenesis of IPF, and highlight the need for a comprehensive approach to the care of people with IPF [6]. A previous review by PANOS *et al.* [2] highlighted a possible increase in cardiovascular disease in people with IPF, and evidence supporting this observation comes from a recent uncontrolled autopsy study in which nine out of 42 people with IPF died from a cardiovascular event [4]. Furthermore, in a study of 630 people referred for lung transplantation, KIZER *et al.* [7] found that people with IPF were more than twice as

likely to have angiographic evidence of coronary artery disease as people with nonfibrotic lung diseases. Findings from a recent study suggest that patients with IPF have a marked relative increase in the risk of vascular disease (angina, acute coronary syndromes, and deep-vein thrombosis) [8], and this should be considered during the routine care of these patients.

#### Prognostic evaluation in IPF

The clinical course of patients with IPF is variable and can display long periods of stability, a steady gradual decline, and/or periods of acute deterioration [3, 9]. This unpredictable nature of usual interstitial pneumonia (UIP)/IPF highlights the importance of identifying factors that can help refine the prognosis for patients at the time of initial diagnosis. One of the most striking findings of a recent study [10] is the variable high-resolution computed tomography (HRCT) appearance of UIP despite very rigid histopathological criteria. It would have been expected that the rigid inclusion criteria define a more homogeneous patient population with similar HRCT features. Interestingly, only approximately one-third of HRCTs showed definite IPF (figs 1 and 2) and approximately one-third suggested an alternative diagnosis, such as nonspecific interstitial pneumonia (NSIP) (fig. 3), or were unclassifiable. This study highlights the critical importance of a surgical lung biopsy in making an accurate diagnosis in patients without definite HRCT appearance of UIP, even when an alternative diagnosis, such as NSIP, is suspected [11]. This study also sheds additional light on the role of HRCT in determining prognosis for patients with UIP/IPF. The survival of patients within each HRCT category was statistically similar, although the median survival was shortest for the definite UIP group (35 months), intermediate for the consistent with UIP group (43 months), and longest for the alternative diagnosis group (112 months). The lack of statistical significance in the study could be due to limited sample size or selection bias [10].

A decrease in forced vital capacity (FVC) of at least 10% or diffusing capacity for carbon monoxide ( $DL_{CO}$ ) of at least 15% over 6 or 12 months is associated with decreased survival [12, 13]. Although change in FVC is a good surrogate for subsequent mortality, it is imperfect as some patients die without a 10% decline in FVC, whereas others can live for prolonged periods even after a 10% decline in FVC [3, 14]. Distance walked during 6-min walk test (6MWT) was an important prognostic factor in recent studies [15, 16]; however, the prognostic value of desaturation and distance walked during 6MWT remain controversial. Maximal oxygen uptake ( $V'O_{2,max}$ ) is an integrated measure of cardiovascular, respiratory, and neuromuscular function. In a recent study, a baseline  $V'O_{2,max}$

Unità Operativa di Pneumologia e Terapia Semi-Intensiva Respiratoria, Servizio di Fisiopatologia Respiratoria ed Emodinamica Polmonare Ospedale San Giuseppe, Milan, Italy.

CORRESPONDENCE: S. Harari, Unità Operativa di Pneumologia, Ospedale San Giuseppe, Via San Vittore, 12, 20123 Milan, Italy. E-mail: sharari@ilpolmone.it

Received: March 13 2010; Accepted after revision: March 29 2010

PROVENANCE: Submitted article, peer reviewed.



**FIGURE 1.** Definite usual interstitial pneumonia pattern. High-resolution computed tomography demonstrates honeycombing in a predominantly peripheral distribution.

$<8.3 \text{ mL}\cdot\text{kg}^{-1}\cdot\text{min}^{-1}$  threshold was identified in IPF patients, below which the risk of death was greatly increased [17].

An area of debate is the utility of bronchoalveolar lavage (BAL) for diagnosis and/or prognosis in IPF. Although the pattern of cells recovered with this procedure may narrow the differential diagnosis of interstitial pneumonias, its role in IPF remains controversial. A previous report suggested that BAL lymphocytosis  $>20\%$  is associated with response to anti-inflammatory therapy and improved survival in biopsy-proven patients with IPF [18]. KINDER *et al.* [19] report that a low percentage of neutrophils ( $<3\%$ ) is associated with favourable outcomes, and that each doubling of baseline BAL fluid neutrophil percentage is associated with a 30% increased risk of mortality during the first year after diagnosis. The presence of BAL lymphocytosis was shown to shift diagnostic probabilities from IPF to hypersensitivity pneumonitis or sarcoidosis. In patients with IPF, as then diagnosed, BAL lymphocytosis denoted a better outcome from treatment. These data suggest that the utility of BAL for risk stratification of patients with IPF should be reconsidered [20, 21]. There may be a complementary role for BAL with cellular differentials in diagnosing interstitial lung diseases (ILDs) in a minority of subjects. In patients suspected of IPF clinically, without classic computed tomography features for IPF (absence of honeycombing or a substantial amount of ground-glass opacification outside of areas of reticulation) and who are at high risk for surgical lung biopsy, BAL may be a reasonable tool to use. Surfactant protein (SP)-A and SP-D are members of the collectin family. Secreted primarily by alveolar epithelial type II pneumocytes, plasma SP-A and SP-D levels appear to increase early after breakdown in the alveolar epithelium. SP-A has been shown to be present in abnormal amounts in the BAL fluid of patients with IPF [22]. In a recent study, KINDER *et al.* [23] demonstrated that serum SP-A level at the time of diagnosis of IPF is a strong independent predictor of time to death or to lung transplantation, particularly during the first

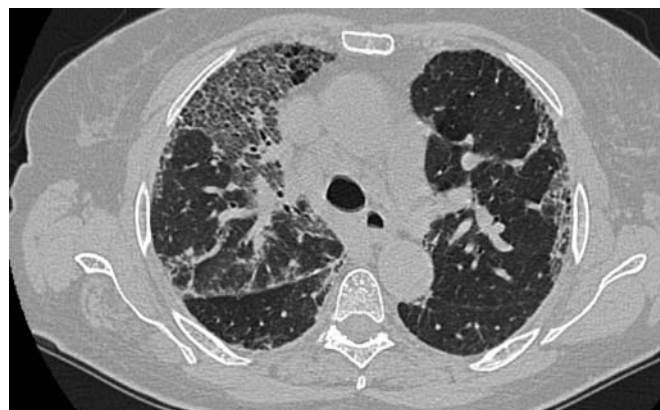


**FIGURE 2.** A pattern consistent with usual interstitial pneumonia pattern. High-resolution computed tomography image demonstrates irregular intralobular reticular opacity, ground-glass opacity and traction bronchiectasis in a predominantly peripheral distribution. There is no extensive honeycombing.

year of follow-up. Increased serum SP-A concentrations may identify a subset of patients with more “active” disease that increases the risk of death in the following year and was not predicted by other baseline, noninvasive clinical predictors, such as lung function test results.

#### **Acute exacerbation of IPF: radiological/pathological aspects and pathogenesis**

Acute exacerbation of IPF (IPF-AE) is a challenging problem, defined as a rapid deterioration of IPF during the course of the disease that cannot be attributed to infection, pulmonary embolism or heart failure; mortality rates may be as high as 60 to 70% over 3 to 6 months [24]. There is no known effective therapy for this devastating disease, and potential new approaches [25] in well-designed clinical trials are urgently needed. The pathological hallmark of IPF-AE is diffuse alveolar damage (DAD) superimposed on the UIP pattern



**FIGURE 3.** Pattern high-resolution computed tomography consistent with nonspecific interstitial pneumonia in a patient with histological diagnosis of usual interstitial pneumonia. Ground-glass opacities, reticulation and marked traction bronchiectasis are present in the lung.

characteristic in IPF [26]. IPF-AE can occur at any time during the disease course, and the risk of an exacerbation does not appear to be linked to the level of pulmonary function derangement, age or smoking history [27]. The histological findings from lung biopsy specimens show variable aspects; the typical UIP pattern is associated with signs of acute lesions, such as DAD with or without hyaline membranes, numerous fibroblastic foci, organising pneumonia, and haemorrhage with capillaritis [26, 28]. CHURG *et al.* [29] described that three microscopic patterns of acute lung injury were seen in IPF-AE: DAD, organising pneumonia and a pattern of numerous very large fibroblastic foci superimposed on underlying fibrosis, and that patients with organising pneumonia or extensive fibroblastic foci as the acute pattern seem to do better than those with DAD. New areas of ground-glass opacities can be identified on HRCT during IPF-AE, and the extent and pattern of these are linked to prognosis [30]. In the IPF-AE, two basic computed tomography patterns may be classified: new areas of parenchymal opacification mainly within the peripheral region with relatively limited damage, and new areas of parenchymal opacification that spread rapidly throughout the lung with a fulminant clinical course. AKIRA *et al.* [30] demonstrated that survival was worse for patients with HRCT diffuse pattern than for those with both peripheral and multifocal pattern. Computed tomography scans of multifocal pattern were obtained in the earlier phase of acute exacerbation compared with those of diffuse pattern and multifocal pattern evolved into diffuse pattern for a short period. Multifocal pattern is considered to be the early phase of diffuse pattern. Peripheral pattern does not evolve into diffuse pattern for a short period. On the basis of computed tomography–pathological correlation in this study, diffuse pattern corresponded to DAD, whereas peripheral pattern mainly correlated with organising pneumonia or numerous fibroblastic foci. The computed tomography extent and patterns had a higher predictive value regarding patient survival than did the clinical and laboratory data [30].

Little is known about the pathogenesis of IPF-AE. Along with histopathology of DAD, there is evidence of loss of alveolar epithelial cell integrity [28]. It has been suggested that IPF-AE may represent a response to a clinically occult infection [31, 32] but direct evidence of an association with infections is still missing [33]. To generate new hypotheses regarding the molecular events that underlie IPF-AE and to identify new potential biomarkers for this syndrome, a recent study analysed the global gene expression patterns in the lungs of patients undergoing IPF-AE and compared them with stable IPF and control lungs [34]. Compared with control samples, IPF and IPF-AE lungs exhibited similar gene expression signatures. However, on direct comparison of IPF and IPF-AE the study identified differentially expressed genes and chose to focus the validation on CCNA2 and  $\alpha$ -defensins. CCNA2, a general regulator of the cell cycle, was among the most upregulated genes in IPF-AE. Increased CCNA2 protein expression was localised to proliferating epithelial cells but not to mesenchymal cells. The overexpression and localisation of CCNA2 to epithelial cells but not to mesenchymal cells suggests that IPF-AE is probably an extension of the epithelial injury and dysregulation that characterises IPF [35] and definitely is not a result of uncontrolled fibroblast proliferation.

Gene expression patterns indicate that IPF-AE represents an extension of the molecular process that underlies IPF and not a new process. Gene expression levels of  $\alpha$ -defensins were upregulated in IPF-AE and their protein expression was localised to the alveolar epithelium in IPF-AE. Plasma  $\alpha$ -defensin concentrations were higher in patients with IPF-AE compared with those with stable IPF or control subjects. Taken together, these results indicate the central role of the pulmonary epithelium in IPF-AE and suggest a potential role for  $\alpha$ -defensins as peripheral blood biomarkers in IPF-AE [34].

### **New insights in therapy and pathogenesis of IPF**

IPF is among the most therapeutically challenging lung disorders. No pharmacological agent improves survival in IPF and the search for an effective agent to treat IPF continues. Immunosuppressive treatment regimens have been used in the treatment of IPF; however, there is little evidence to support their efficacy and safety. As more has been discovered about the pathophysiological processes underlying IPF, new therapeutic approaches have been explored and controlled clinical trials conducted on these new therapies. For example, there is accumulating evidence that endothelin (ET)-1, a potent vasoconstrictor, plays an important role in the aetiology of IPF and that drugs that target ET-1 may be of benefit in patients with IPF. Bosentan, an oral dual receptor antagonist of ET-1, represents an interesting prospect for evaluation as a treatment for IPF. The randomised, placebo-controlled BUILD (Bosentan Use in Interstitial Lung Disease)-1 trial evaluated the efficacy, safety, and tolerability of bosentan in patients with IPF without evidence of pulmonary hypertension (PH) [36]. Although bosentan did not affect the exercise capacity of patients in this trial, as measured by a modified 6MWT, it demonstrated promising effects on time to disease progression or death, with a more pronounced treatment effect in the subset of patients entered on the basis of biopsy-confirmed IPF. These observations are being investigated further in the randomised, placebo-controlled, event-driven morbidity/mortality study, BUILD-3. Results of this study have been disclosed recently. While there was a consistent trend in favour of bosentan, the primary end-point, time to disease worsening or death, was not met. Studies with macitentan, a new, potent (~10 times more potent than bosentan) dual receptor antagonist of ET-1, and ambrisentan, a more selective ET-1 receptor antagonist, are ongoing.

The effect of interferon (IFN)- $\gamma$  in patients with IPF was also assessed in the multicentre, double-blind, randomised INSPIRE study with survival time as the primary end-point [37]. However, this study was stopped prematurely following a planned interim analysis. The results showed that overall survival had crossed the predefined stopping boundary for lack of benefit, although among the 826 randomised patients there was not a statistically significant difference between treatment groups in overall mortality (14.5% in the IFN- $\gamma$  group compared with 12.7% in the placebo group).

RAGHU *et al.* [38] report an important, albeit negative, result in a well-designed randomised controlled trial of tumour necrosis factor (TNF)- $\alpha$  antagonist therapy in patients with IPF. The negative result of the etanercept study is unequivocal because the trialists used a placebo-controlled design, which is ethically acceptable when no known effective therapy exists. It would be

less appropriate to conduct a trial in which both groups receive therapy of unknown efficacy (even though standard of care); this study design makes results regarding the experimental intervention impossible to interpret. It remains unclear, for example, whether *N*-acetylcysteine has a beneficial effect in patients with IPF because both groups received prednisone and azathioprine [39]. The placebo-controlled design of the etanercept trial is an important benchmark for future IPF studies [40]. Because this study included only a modest number of subjects, it was not altogether surprising that there were no statistically significant differences between treatment groups in the three primary end-points: changes in FVC % predicted, DLCO haemoglobin % predicted and alveolar-arterial oxygen tension difference (at rest) at 48 weeks. However, a consistent trend in favour of etanercept was observed in several lung function and quality-of-life measures. This study was limited by a lack of power, which minimised the chance of achieving a positive result. The results observed here support further investigation of TNF antagonists in clinical trials with adequate sample size and controls [38]. In a randomised, placebo-controlled trial of patients with mild to moderate IPF followed for 96 weeks, imatinib did not affect survival or lung function [41]. A randomised, controlled pilot trial compared oral cotrimoxazole to a placebo in 20 patients with advanced progressive fibrosing lung diseases over a period of 3 months, followed by 6 weeks of pulmonary rehabilitation before decoding [42]. Positive findings were reported for the shuttle-walking test as well as for lung function measures and dyspnoea score. The mechanism by which co-trimoxazole may improve or stabilise idiopathic interstitial pneumonia (IIP) is unknown but several possibilities exist: 1) antibacterial action: subclinical infection may influence inflammatory mechanisms and the fibrotic process; 2) antifungal actions: co-trimoxazole is active against fungi and protozoans, including pneumocystis, and many patients with IPF experienced long-term immunosuppression; and 3) immune modulating: co-trimoxazole is an effective monotherapy for the treatment of Wegener's granulomatosis and its anti-staphylococcal action and anti-inflammatory properties are hypothesised important mechanisms. Despite the many limitations of this preliminary pilot study, the utility of antibiotic or antifungal therapy as adjunctive therapy for advanced fibrotic lung disease may merit further investigation. Similar to other chronic pulmonary diseases (e.g. emphysema or even PH), there is emerging evidence that pulmonary rehabilitation may improve exercise tolerance, health status and quality of life in patients with diffuse parenchymal lung diseases (DPLDs) [43–45]. These studies were limited, however, by the small numbers of patients enrolled and the lack of any benefit beyond 6 months [44]. Adequately designed and powered studies are needed to confirm these initial results and to assess the contribution of rehabilitation as part of a comprehensive treatment approach to patients with DPLDs. Publication of results of multicentre, double-blind, placebo-controlled randomised study on pirfenidone treatment in IPF (CAPACITY trial) are pending. A total of 779 patients were enrolled in the CAPACITY trials at 110 sites in 11 countries. Preliminary results show a significantly smaller loss of lung function after 72 weeks than placebo in one study (CAPACITY 2), but the other almost identical trial (CAPACITY 1) did not show such benefit in the primary end-point; supportive

evidence of a pirfenidone treatment effect was observed on a number of secondary end-points in CAPACITY 1 [46]. Data from these two studies suggests that pirfenidone has a positive treatment effect on patients with IPF. The CAPACITY trials follow a phase III clinical study conducted in Japan which demonstrated the ability of pirfenidone to reduce the decline of lung capacity and improve progression-free survival [47] and served as the basis for the Japanese regulatory authorities' approval of the drug for the treatment of IPF in Japan. The Food and Drug Administration evaluation of pirfenidone for IPF treatment in the USA is ongoing.

Despite a large number of new therapeutic agents being evaluated in clinical trials, there is no effective treatment for IPF patients. The recurrent and frustrating observation that steroids and immunosuppressants are of limited help in IPF, coincident with new insights into genetic aberrations in familial forms of IIP, caused a paradigm shift with respect to the pathogenetic mechanism of IPF: what was once believed to be triggered by chronic inflammation is now believed to be caused by repeated alveolar epithelial cell injury. Like many other complex human diseases, a single aetiology or aberrant signalling pathway may not be causal in all cases [48]. As its name suggests, IPF is a disorder with an enigmatic pathogenesis. It is currently believed that IPF is an epithelial-fibroblastic disease, in which unknown endogenous or environmental stimuli disrupt the homeostasis of alveolar epithelial cells, resulting in diffuse epithelial cell activation and aberrant epithelial repair [49]. It is already known that familial IPF occurs as an autosomal dominant disorder with variable penetrance [50–52]. To date, only three candidate genetic mutations have emerged from studies of pulmonary fibrosis in affected families. The evidence for genetic factors in sporadic IPF is much less compelling. LOYD [53] explores mutations in the genes encoding SP-C (SFTPC) and components of the telomerase gene, *i.e.* human telomerase reverse transcriptase and telomerase RNA component. Further research in this field will surely reveal other important candidates and will one day help to identify future therapeutic targets for this hugely challenging disease. CRONKHITE *et al.* [54] describe the unexpected and fascinating finding that telomeres are severely shortened in peripheral leukocytes in approximately one-quarter of sporadic and familial cases of pulmonary fibrosis. In families with IPF with a genomic telomerase mutation as the basis, the parenchymal lung cells have a mutant telomerase (an enzyme that is responsible for maintenance of telomere lengths in replicating stem/progenitor cells), suggesting the possibility that cell demise or limited regenerative capacity, or both, may be a central feature that may initiate the disease process. ALDER *et al.* [55] showed that telomere length in alveolar epithelium and peripheral blood leukocytes from patients with IPF was significantly shortened. Shortened telomeres in these patients occurred even in the absence of a family history or detectable mutations in telomerase. The striking loss of cellular homeostasis in IPF is notable for the increase in the number of mesenchymal cells, including clusters of myofibroblasts within the architecturally remodelled alveoli of the UIP lung. IPF is primarily a disease of the elderly, with a remarkable increase in incidence and prevalence beyond the fifth decade of life [56]. In the lung, the alveolar epithelial lining composed primarily of flattened, differentiated alveolar type 1 (AT1) cells comprise

>95% of the alveolar surface area and are replenished by its tissue- and lineage-specific progenitors, the alveolar type 2 (AT2) cells. Lung-resident mesenchymal stem/progenitor cells (MSCs) have only recently been identified, both in adult lung of humans [57] and mice [58, 59]. As is true for adult tissue-resident stem/progenitor cells (but not differentiated somatic cells), both AT2 cells [60] and MSCs [59] express telomerase. Telomere shortening is associated with reduced capacity for stem cell renewal, cellular senescence, and organism aging [61]. One might predict that telomere shortening in AT2 cells would diminish regenerative capacity of the alveolar epithelium. Another intriguing question that the study raises is why the same host and environmental factors that presumably suppress the regenerative capacity of epithelial stem cells do not affect the mesenchymal response. This may be explained by the observation that telomere length and telomerase activity in stem/progenitor cells may be cell specific and autonomous [62]. In fact, it is likely that cells within even the same stem cell compartment may be influenced to varying degrees by the cumulative, stochastic events that influence telomere length and resultant regenerative capacity. This may also provide a plausible explanation for the observed spatial-temporal heterogeneity in UIP. Further studies are required to define telomerase expressing cells in the lungs of patients with IPF as well as telomere (dys)function in different stem cell compartments and their resultant cellular phenotypes. Such studies will aid in defining whether IPF represents a disorder of stem cell senescence and impaired lung regeneration [63].

In a recent study, it was demonstrated for the first time that a severe endoplasmic reticulum stress response in the AT2 cells seems to underlie the execution of the intrinsic apoptosis pathway, and thus the programmed cell death of this cell type, in patients with sporadic IPF. Endoplasmic reticulum stress response may represent an important trigger mechanism of the aberrant fibrotic repair observed in IPF [64].

IPF is characterised by myofibroblast accumulation and progressive lung scarring. Mesenchymal cells are responsible for deposition of extracellular matrix proteins such as collagen and fibronectin in the lung parenchyma and this compromises gas exchange. These mesenchymal cells may arise from three distinct sources. First, resident lung fibroblasts proliferate and differentiate into myofibroblasts, prodigious producers of collagen and contractile contributors to alveolar collapse and traction bronchiectasis. The second source may involve epithelial to mesenchymal transition, a process whereby epithelial cells release from basement membrane and undergo reprogramming that allows them to acquire a mesenchymal phenotype [65]. The third source involves recruitment of circulating bone marrow-derived precursors, known as fibrocytes, which share mesenchymal and leukocyte markers [66]. Significant increases in percentages of circulating fibrocytes were found in both stable and acute cohorts with IPF when compared with healthy volunteers, but the numbers were most striking in patients with IPF-AE [67]. This study suggests that the percentage of fibrocytes in circulation may serve as a biomarker for the presence of fibrotic lung disease and may be a useful biomarker for acute exacerbations [67]. Currently, therapeutic trials in IPF are hampered by the lack of robust easily obtained outcome variables for analysis and response to therapy. Changes in FVC are used to predict disease severity but

may not reflect pathological changes in the disease process [3]. Serial analyses of fibrocytes may predict stability, deterioration and/or acute exacerbation. Additionally, this recent study indicates that fibrocyte percentages >5% are independent predictors of early mortality in IPF [67]. An ancillary study for the IPF Network, "prednisone, azathioprine and N-acetylcysteine: a three arm study that evaluates responses in IPF", or PANTHER trial, will include an analysis of fibrocyte numbers and chemokine receptor profiling at baseline, mid-point, and at the conclusion of the study (weeks 0, 32, and 60) for up to 130 patients in each of three study arms [68].

Normal lung development and alveologenesis, which may continue into adolescence, are highly complex and regulated processes that are dependent on epithelial/endothelial-mesenchymal interactions. Although dormant in the uninjured adult lung, many developmental pathways are reactivated in the context of injury, repair and regeneration [69–71]. Together, these studies highlight the role of conserved developmental pathways in adult lung regeneration and support potential opportunities to modulate the reparative process in patients with DPLD.

### NONSPECIFIC INTERSTITIAL PNEUMONIA

NSIP is often a source of diagnostic confusion. A recent study clearly demonstrates that NSIP is a separate entity and nicely determines its characteristics [72]. Key features of NSIP on HRCT are bilateral, symmetrical, predominantly lower lung reticular opacities with traction bronchiectasis and lower lobe volume loss that is usually diffuse or sub-pleural in the axial dimension but sometimes spares the sub-pleural lung [72]. If typical HRCT features are sufficient to allow a confident diagnosis of IPF/UIP in >50% of suspected cases, the HRCT sensitivity and specificity in the NSIP diagnosis are lower; there is overlap between the HRCT findings of UIP and those of NSIP in several cases. It must be pointed out that a confident diagnosis of NSIP requires surgical biopsy. A large proportion of patients initially considered to have idiopathic NSIP were subsequently reclassified as having hypersensitivity pneumonitis, IPF or organising pneumonia. When an HRCT scan shows classical features of hypersensitivity pneumonitis or organising pneumonia, these diagnoses are favoured over idiopathic NSIP, even if a surgical lung biopsy shows histological features of the NSIP pattern. Similarly, an HRCT showing a typical pattern of UIP (in particular, honeycomb changes) leads to a diagnosis of IPF, even when a surgical lung biopsy shows histological features of NSIP [72]. The difficulties inherent in trying to identify a discrete clinical, histological and radiological phenotype for NSIP arise because NSIP represents the common histological lesion of a range of diseases. NSIP is one of the most common patterns of interstitial pneumonia, not only in IIP, but also in patients with other disorders causing interstitial pneumonia, such as connective tissue diseases (CTDs), infection and drug or environmental toxicity. KINDER *et al.* [73] reported that 88% of their cases of idiopathic NSIP had manifestations of an undifferentiated CTD. In another study, ~10% of the patients developed CTD during follow-up and they were younger and had higher rheumatoid factor positivity [74]. It was also found that honeycombing on the initial HRCT, initial pulmonary function test and changes in FVC at 12 months have considerable prognostic value [74].

Whether idiopathic NSIP is an autoimmune disease needs further investigations. In cases in which computed tomography or biopsy are believed to show features of NSIP, but in which there are incomplete data or suspicion of an alternative diagnosis, such as hypersensitivity pneumonitis, the term “NSIP pattern” is appropriate [72]. Therefore, it is current opinion that the integrative approach of clinical–radiological–pathological data must be extended to the whole spectrum of DPLD, as in all these disorders diagnosis is very complex, and the same problems of sampling error and interobserver variation between pathologists are encountered [72].

### CONNECTIVE TISSUE DISEASE

A recent study confirmed that patients with CTD–interstitial pneumonia survived longer than those with IIP, but this was mainly because the survival of patients with CTD/UIP was longer than those with IPF/UIP, and not just due to a higher prevalence of a NSIP pattern in patients with CTDs (figs 4 and 5) [75]. In patients with a NSIP pattern as an overall group, there was no survival benefit in the CTD/NSIP group compared with the idiopathic NSIP group. Interestingly, mortality in UIP was higher in rheumatoid arthritis than in other CTDs and was only marginally lower than in IPF, although the small size of the rheumatoid arthritis subgroup is an important caveat [75]. UIP was more prevalent than NSIP in this rheumatoid arthritis cohort, and, based on earlier reports [76–78], appears to be much more prevalent in rheumatoid arthritis than in other CTDs.

The Scleroderma Lung Study group reported that, after 1 yr of placebo-controlled oral cyclophosphamide for pulmonary fibrosis in systemic sclerosis (SSc), the benefits of active treatment persisted at 6 months but not at 1 yr [79]. Importantly, the treatment benefit resulted in the prevention

of disease progression in more advanced fibrotic disease, rather than regression of reversible inflammatory disease. One obvious implication is that oral cyclophosphamide therapy should be consolidated by a less toxic agent in the longer term. Intravenous cyclophosphamide and oral mycophenolate mofetil have both been proposed as suitable longer term treatments, or even as substitutes for the initial use of oral cyclophosphamide [80–83]. Although historically considered to provide useful prognostic information in SSc, the presence of a BAL neutrophilia was recently found in a large SSc cohort to be linked only to early mortality and not to long-term survival or the rapidity of pulmonary function decline [84]. In a prospective study of 105 patients, only diffuse SSc was predictive of a decrease in pulmonary function; this observation does not support preliminary data suggestive of a causative role of oesophageal involvement [85]. In a recent study, serum levels of SP-D and KL-6, a mucin-like glycoprotein, appear to be indicative of “alveolitis” in SSc patients, and are significantly higher than in SSc patients without “alveolitis” [86]. Serum SP-D and KL-6 may serve as noninvasive serological means of assessing ILD in patients with SSc.

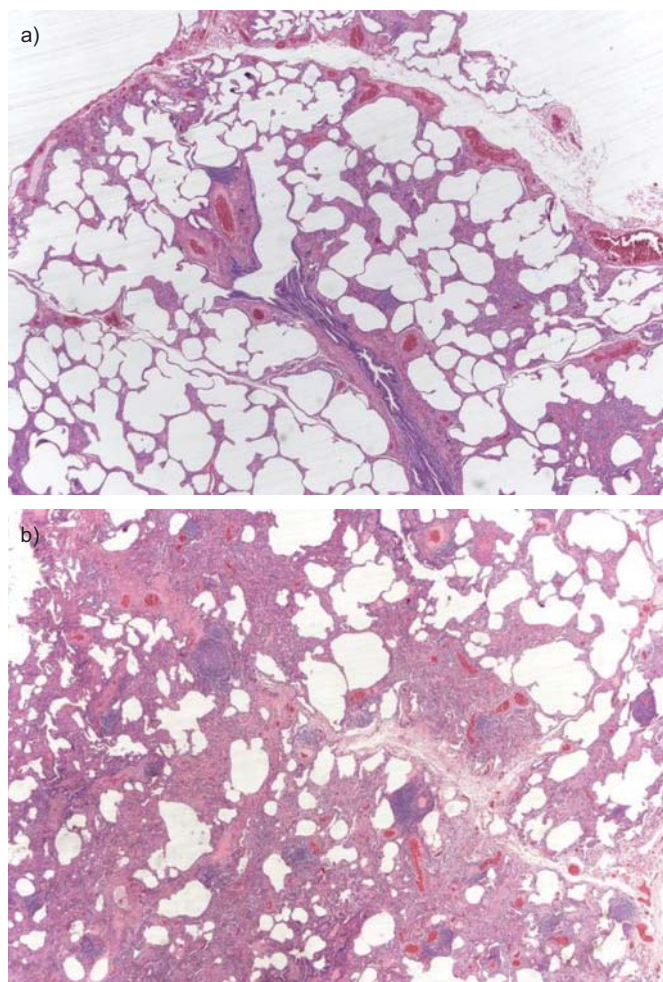
### Hypersensitivity pneumonitis

Hypersensitivity pneumonitis, also termed extrinsic allergic alveolitis, is a form of DPLD resulting from an aberrant immunological response to an inhaled allergen in sensitised patients. Currently, no “gold standard” exists for diagnosing hypersensitivity pneumonitis, although identifying an inciting antigen linked to exacerbation and remission of symptoms is essential. A subset of patients with suspected hypersensitivity pneumonitis lacks an identifiable antigenic exposure. Lung biopsy plays an especially important role in identifying patients for whom no offending antigen is discovered, particularly those with chronic, persistent symptoms. Histological features that allow confident recognition of hypersensitivity pneumonitis in the appropriate clinical context include a bronchiolocentric interstitial pneumonia comprising a combination of chronic inflammation and variable degrees of fibrosis, chronic bronchiolitis and poorly formed granulomas that typically take the form of isolated multinucleated giant cells within peribronchiolar interstitium [87]. Occasionally, surgical lung biopsies may lack diagnostic features, showing instead NSIP without associated granulomatous inflammation. UIP also has been described in patients with suspected hypersensitivity pneumonitis [88]. Surgical lung biopsy is helpful in separating hypersensitivity pneumonitis from other forms of DPLD, including IIP. Late stage hypersensitivity pneumonitis and UIP may be indistinguishable in some patients [89]. The presence and the extent of fibrosis on HRCT predicts survival in hypersensitivity pneumonitis patients. Hypersensitivity pneumonitis may resemble NSIP or UIP by both radiological and histopathological assessment, and these appearances likely portend worse prognosis [88, 90, 91]. Recently, SILVA *et al.* [92] demonstrated that the computed tomography features that best differentiated hypersensitivity pneumonitis from NSIP and UIP were lobular areas with decreased attenuation, absence of lower zone predominance, and presence of centrilobular nodules (fig. 6).

A recent study proposes that the clinical course of fibrotic hypersensitivity pneumonitis, like other forms of fibrotic lung disease, can be associated with idiopathic acute exacerbations



**FIGURE 4.** High-resolution computed tomography with nonspecific interstitial pneumonia pattern in a patient with connective tissue disease; bilateral reticulation and ground-glass are present. Although the abnormality shows peripheral predominance in about one-third of cases, the relative sparing of the immediate sub-pleural zone of lung seen in ~20% of cases may sometimes be a helpful diagnostic finding.

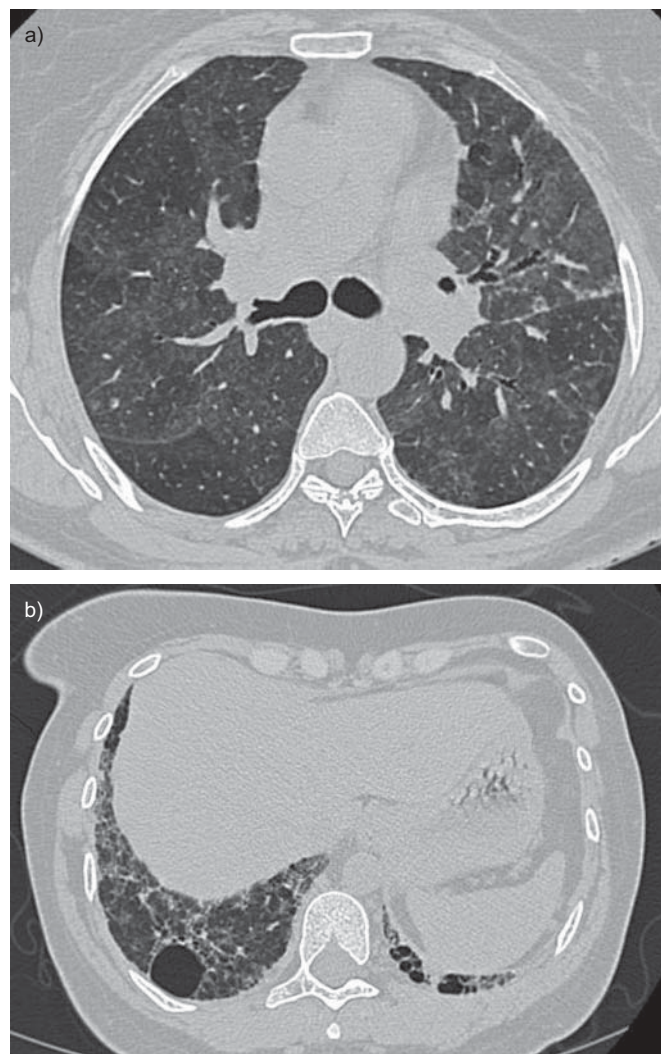


**FIGURE 5.** Nonspecific interstitial pneumonia fibrosing pattern in a case of connective tissue disease. a) The alveolar walls are thickened by interstitial fibrosis and chronic inflammation. b) Hyperplasia of the lymphoid tissue is present.

of disease leading to rapid respiratory deterioration and predicting a poor outcome. Further investigations into the similarities between these fibrotic lung diseases and the (possible) common pathway of acute exacerbations may yield additional insights into this recently recognised syndrome and, possibly, a better understanding of the mechanisms of fibrosis involved in these different disease processes [93].

### LYMPHANGIOLEIOMYOMATOSIS

Lymphangiomyomatosis (LAM) is a rare lung disease affecting females, with onset typically during the childbearing years. LAM can occur in females with tuberous sclerosis complex (TSC), an autosomal dominant disease characterised by neurological disease (*i.e.* seizures, intellectual disability and autism) and benign tumours of the brain, skin, heart and kidneys. About 30% of females with TSC have evidence of cystic lung disease on computed tomography scans and are believed to have LAM (fig. 7). While the rate of progression is variable, most females survive between 10 and 20 yrs after diagnosis. Four natural history studies found that loss of forced expiratory volume in 1 s (FEV1) averaged 75–156 mL per year [94–97]. LAM varies in clinical features and rate of



**FIGURE 6.** a) High-resolution computed tomography shows innumerable ill-defined centrilobular ground-glass opacity nodules, characteristic of sub-acute hypersensitivity pneumonitis. Note that there are also foci of relative sparing associated with air trapping. b) Evidence of fibrosis with irregular reticular opacities, traction bronchiectasis and architectural distortion in chronic hypersensitivity pneumonitis. A large cyst is present in the lower right lobe.

progression; this, together with an absence of clear prognostic factors, results in patients being given conflicting information about prognosis.  $DL_{CO}$ , which is abnormal in more patients than FEV1, may be a more sensitive indicator of early disease. Patients with LAM may have partially reversible airflow obstruction. A positive response to bronchodilators is associated with an accelerated rate of decline in pulmonary function [98]. Lung transplantation remains the only viable option for end-stage disease. Several potential treatment regimens directed at hormonal manipulation have proven largely ineffective and the link between female sex and LAM remains unexplained [96]. Pathologically, LAM is characterised by two distinct components: LAM cells and cystic areas of alveolar destruction. Smooth muscle (SM)-like LAM cells represent a unique type of mesenchymal cell, expressing SM-specific markers, continuously proliferating and invading the lung parenchyma. Although the origin of LAM cells

remains unknown, some progress has been made in our understanding of the genetics and signal transduction mechanisms regulating SM-like LAM cell proliferation and migration. In the past few years, our understanding of the SM-like cells in LAM has greatly improved. Abnormal growth, proliferation and migration of atypical SM-like LAM cells in the lungs lead to cystic destruction of the lungs. TSC1/TSC2 tumour suppressor complex mutations had been linked to the abnormal growth and migration of LAM cells. TSC2 dysfunction in LAM cells results in the constitutive activation of p70 S6 kinase (S6K1), which identifies S6K1 as a molecular target for treatment of LAM disease [99–102]. In summary, it is apparent that LAM cell behaviour, including growth, proliferation, adhesion and motility, plays a critical role in LAM disease. However, whether only TSC1 or TSC2 dysfunction accounts for the multisystem pathological changes seen in pulmonary LAM needs to be established. LAM pathology provides clues to the enigmatic complexity of LAM disease, the solving of which may lead not only to elucidating cellular and molecular mechanisms but may also pave the way toward finding the cure for LAM. The importance of further investigations into a role of SM-like cells in the aetiology and pathology of LAM cannot be overestimated, not only because they may uncover mechanisms of LAM pathology but may also have the potential to develop novel therapeutic strategies for LAM treatment [102]. The role of mammalian target of rapamycin (mTOR) inhibition in the therapy of patients with TSC and LAM was recently investigated [103]. These rapid-fire advances led to a prospective therapeutic trial in patients with LAM and TSC with angiomyolipomas, with angiomyolipoma volume as the primary end-point. Patients received 12 months of rapamycin, followed by 12 months of follow-up after discontinuation of rapamycin [104]. There was no randomisation or placebo control arm in this initial study. Of 25 males and females enrolled, 20 patients completed 12 months of rapamycin and 18 patients completed the full study, including the 12 months of follow-up after rapamycin. Angiomyolipoma volume decreased to 53% of baseline after 12 months of rapamycin therapy, and after discontinuation increased to 86% of baseline at 24 months. 18 of the patients had LAM, with 12 having TSC-associated LAM and six having sporadic LAM. The improved lung function in the 10 females is extremely encouraging, and perhaps unexpected: one might have expected stabilisation of lung function, rather than improvement, because the degradation of lung parenchyma that accompanies LAM would not likely be correctable, at least during 12 months of therapy with a TORC1 (mTOR complex 1) inhibitor. Although the mechanisms of this improvement are unknown, one possibility is that shrinkage or elimination of LAM cells improves the elasticity and mechanics of the residual areas of normal lung. Importantly, however, a second study in the UK has reported interim results of a 24-month trial of rapamycin for patients with TSC and LAM [105], and found no evidence of improved FEV<sub>1</sub> or FVC in the four females with LAM who had completed 12 months of rapamycin. Possible explanations for these differences include an unrecognised difference in the severity or clinical parameters of LAM between the Cincinnati and UK cohorts, which may be amplified by the small numbers of patients, the impact of dose reductions or cessations related to adverse events, and/or the possibility of an effort-dependent placebo effect on the

results of pulmonary function testing. It is likely that clarity will be provided when the completed data are available from the UK trial and when results are available from the Multicenter International LAM Efficacy of Sirolimus (MILES) trial, the first prospective, randomised clinical trial in pulmonary LAM, representing another landmark in the history of LAM research [103]. This trial completed accrual in 2009. An open-label, nonrandomised, within-subject dose escalation safety, tolerability and efficacy study of everolimus (a second generation mTOR inhibitor) in females with sporadic or TSC-associated LAM is ongoing. A case report showed benefit from doxycycline in a patient with LAM [106]. This case supports the hypothesis that doxycycline may represent a promising therapy for LAM. The evaluation of the role of doxycycline in LAM therapy is ongoing. Recently, the European Respiratory Society published consensus guidelines elaborated from a core panel of specialists for the diagnosis and management of LAM [107]. The recently established International LAM Registry is a component of a set of web-based resources, including a patient self-report data portal, aimed at accelerating research in rare diseases in a rigorous fashion and demonstrates that a collaboration between clinicians, researchers, advocacy groups and patients can create an essential community resource infrastructure to accelerate rare disease research [108].

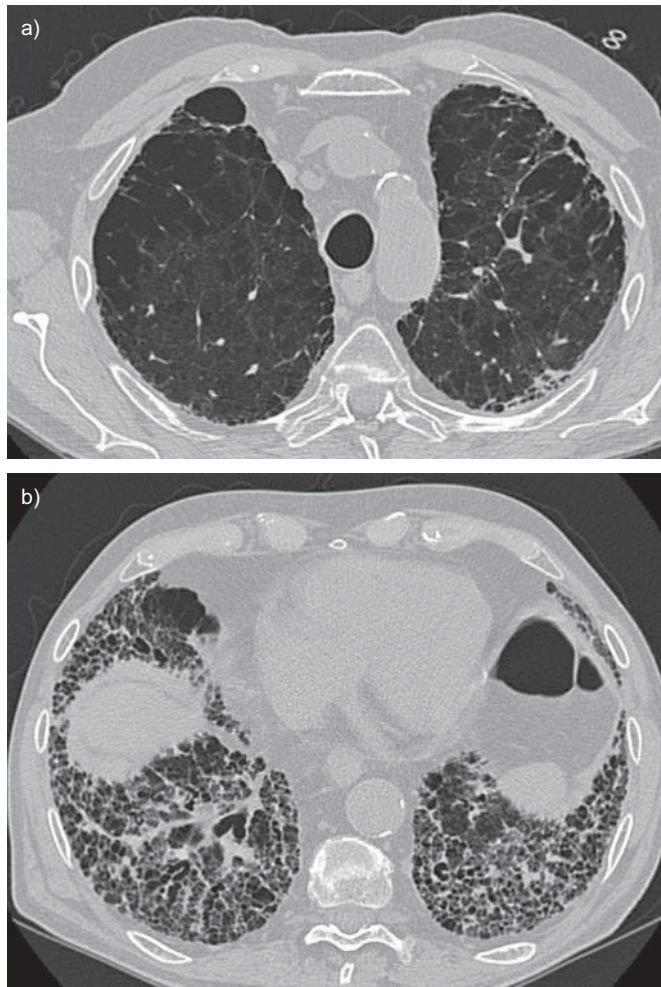
#### PH IN DPLD

PH is prevalent and clinically relevant in various DPLDs [109–111]. The incidence of PH in patients with IPF increases from 39% at the time of listing for lung transplantation to 78% at the time of transplantation [112]. Among the 70 patients who underwent right heart catheterisation (RHC) during their initial workup, the prevalence of PH based on standard criterion (mean pulmonary arterial pressure >25 mmHg) was 8.1% (six patients) [113]. LETTIERI *et al.* [114] reported a markedly higher prevalence of 31.6% among IPF patients who underwent the evaluation while waiting for lung transplantation. In estimations of pulmonary arterial pressure by NADROUS *et al.* [115] using the ultrasound cardiography (USCG) method, systolic pulmonary arterial pressures >50 mmHg were present



**FIGURE 7.** High-resolution computed tomography (HRCT) showing typical changes in a patient with advanced definite lymphangioleiomyomatosis: extensive cystic changes are present. HRCT shows numerous discrete, round, thin-walled lung cysts.





**FIGURE 8.** a) Significant emphysema in upper lobes and b) fibrosis in lower lobes in a patient with combined pulmonary fibrosis and emphysema.

in 30.7% of patients. Differences in the populations and measuring methods in these three studies make it difficult to directly compare the prevalence of PH. Generally, the degree of PH in IPF is mild to moderate, with few subjects developing severe PH by the time of listing for lung transplant. Elevated concentrations of N-terminal pro-brain natriuretic peptide levels and low  $DL_{CO}$  [116] may be predictive of the presence of PH in DPLDs. Studies from the past few years [114, 115] have shown that PH measured with RHC or USCG in IPF patients is associated with low  $DL_{CO}$ , shorter walk distances and desaturation during exercise. Similar relationships have been identified when brain natriuretic peptide was used as a surrogate marker for PH in IPF patients [117]. The optimal approach to identifying which IPF patients have PH remains controversial, however. Nevertheless, increasing PH is associated with an increasing risk of death in IPF patients [114, 115], while elevated pre-operative PH may contribute to post-transplant mortality in IPF [118, 119]. Factors other than the extent of fibrosis appear to play a significant role in the genesis of PH in patients with IPF. These might include, but are not necessarily limited to, local or systemic hypoxaemia, pulmonary thromboembolism, cardiac dysfunction, genetic predisposition, and variable cytokine or chemokine expression.

The aetiology and course of PH in IPF warrants further study, as do therapies directed at preventing or treating this common complicating comorbidity [120]. With the advent of newer options for treating PH, coupled with the lack of effective therapies for IPF, therapy for disproportionate PH (PH associated with DPLD with a median pulmonary arterial pressure level above the usual values) appears an attractive area of investigations.

One important point in recent years in the field of smoking-induced chronic lung disease has been the identification of the syndrome of combined pulmonary fibrosis and emphysema (CPFE) [121]. Not just a distinct phenotype of IPF, the syndrome of CPFE is characterised by the association of distinct features, including tobacco smoking, severe dyspnoea, unexpected subnormal spirometry, severely impaired  $DL_{CO}$ , hypoxaemia on exercise, and characteristic imaging features (centrilobular and/or paraseptal emphysema, and diffuse interstitial opacities suggestive of pulmonary fibrosis of the lower lobes). The pathological features have not yet been formally studied. Pathophysiology of the syndrome beyond the obvious role of tobacco smoking remains to be explored [122]. Suspected in patients with dyspnoea and basal crackles unexplained by spirometry, the syndrome of CPFE can be recognised by the presence of both “significant” emphysema and fibrosis features on HRCT of the chest (fig. 8). Importantly, patients with the syndrome of CPFE have a high probability of severe pre-capillary PH [121], which carries a poor prognosis, with only 60% survival at 1 yr from the date of RHC [123]. Indeed, the risk of developing PH is notably higher in CPFE than in IPF without emphysema [124] and PH (and not only the presence of associated emphysema) represents the main independent determinant of mortality in patients with CPFE [121, 124].

#### STATEMENT OF INTEREST

S. Harari received a grant of €2,000 from Actelion for participating on an advisory board in 2010.

#### REFERENCES

- 1 Olson AL, Swigris JJ, Lezotte DC, *et al.* Mortality from pulmonary fibrosis increased in the United States from 1992 to 2003. *Am J Respir Crit Care Med* 2007; 176: 277–284.
- 2 Panos RJ, Mortenson RL, Niccoli SA, *et al.* Clinical deterioration in patients with idiopathic pulmonary fibrosis: causes and assessment. *Am J Med* 1990; 88: 396–404.
- 3 Martinez FJ, Safrin S, Weycker D, *et al.* The clinical course of patients with idiopathic pulmonary fibrosis. *Ann Intern Med* 2005; 142: 963–967.
- 4 Daniels CE, Yi ES, Ryu JH. Autopsy findings in 42 consecutive patients with idiopathic pulmonary fibrosis. *Eur Respir J* 2008; 32: 170–174.
- 5 Le Jeune I, Gribbin J, West J, *et al.* The incidence of cancer in patients with idiopathic pulmonary fibrosis and sarcoidosis in the UK. *Respir Med* 2007; 101: 2534–2540.
- 6 Vancheri C, Failla M, Crimi N, *et al.* Idiopathic pulmonary fibrosis: a disease with similarities and links to cancer biology. *Eur Respir J* 2010; 35: 496–504.
- 7 Kizer JR, Zisman DA, Blumenthal NP, *et al.* Association between pulmonary fibrosis and coronary artery disease. *Arch Intern Med* 2004; 164: 551–556.

- 8 Hubbard RB, Smith C, Le Jeune I, *et al.* The association between idiopathic pulmonary fibrosis and vascular disease: a population-based study. *Am J Respir Crit Care Med* 2008; 178: 1257–1261.
- 9 Collard HR, Moore BB, Flaherty KR, *et al.* Acute exacerbations of idiopathic pulmonary fibrosis. *Am J Respir Crit Care Med* 2007; 16: 636–643.
- 10 Sumikawa H, Johkoh T, Colby TV, *et al.* Computed tomography findings in pathological usual interstitial pneumonia: relationship to survival. *Am J Respir Crit Care Med* 2008; 177: 433–439.
- 11 Flaherty KR. High-resolution computed tomography and the many faces of idiopathic pulmonary fibrosis. *Am J Respir Crit Care Med* 2008; 177: 367–368.
- 12 Jegal Y, Kim DS, Shim TS, *et al.* Physiology is a stronger predictor of survival than pathology in fibrotic interstitial pneumonia. *Am J Respir Crit Care Med* 2005; 171: 639–644.
- 13 Flaherty KR, Andrei A-C, Murray S, *et al.* Idiopathic pulmonary fibrosis: prognostic value of changes in physiology and six minute hallwalk. *Am J Respir Crit Care Med* 2006; 174: 803–809.
- 14 King TE Jr, Safrin S, Starko KM, *et al.* Analyses of efficacy end points in a controlled trial of interferon- $\gamma$ b for idiopathic pulmonary fibrosis. *Chest* 2005; 127: 171–177.
- 15 Lederer DJ, Arcasoy SM, Wilt JS, *et al.* Six-minute-walk distance predicts waiting list survival in idiopathic pulmonary fibrosis. *Am J Respir Crit Care Med* 2006; 174: 659–664.
- 16 Caminati A, Bianchi A, Cassandro R, *et al.* Walking distance on 6-MWT is a prognostic factor in idiopathic pulmonary fibrosis. *Respir Med* 2009; 103: 117–123.
- 17 Fell CD, Liu LX, Motika C, *et al.* The prognostic value of cardiopulmonary exercise testing in idiopathic pulmonary fibrosis. *Am J Respir Crit Care Med* 2009; 179: 402–407.
- 18 Ryu YJ, Chung MP, Han J, *et al.* Bronchoalveolar lavage in fibrotic idiopathic interstitial pneumonias. *Respir Med* 2007; 101: 655–660.
- 19 Kinder BW, Brown KK, Schwarz MI, *et al.* Baseline BAL neutrophilia predicts early mortality in idiopathic pulmonary fibrosis. *Chest* 2008; 133: 226–232.
- 20 Ohshimo S, Bonella F, Cui A, *et al.* Significance of bronchoalveolar lavage for the diagnosis of idiopathic pulmonary fibrosis. *Am J Respir Crit Care Med* 2009; 179: 1043–1047.
- 21 Kinder BW, Wells AU. The art and science of diagnosing interstitial lung diseases. *Am J Respir Crit Care Med* 2009; 179: 974–975.
- 22 Phelps DS, Umstead TM, Mejia M, *et al.* Increased surfactant protein-A levels in patients with newly diagnosed idiopathic pulmonary fibrosis. *Chest* 2004; 125: 617–625.
- 23 Kinder BW, Brown KK, McCormack FX, *et al.* Serum surfactant protein-A is a strong predictor of early mortality in idiopathic pulmonary fibrosis. *Chest* 2009; 135: 1557–1563.
- 24 Agarwal R, Jindal SK. Acute exacerbation of idiopathic pulmonary fibrosis: a systematic review. *Eur J Intern Med* 2008; 19: 227–235.
- 25 Enomoto N, Suda T, Uto T, *et al.* Possible therapeutic effect of direct haemoperfusion with a polymyxin B immobilized fibre column (PMX-DHP) on pulmonary oxygenation in acute exacerbations of interstitial pneumonia. *Respirology* 2008; 13: 452–460.
- 26 Parambil JG, Myers JL, Ryu JH. Histopathologic features and outcome of patients with acute exacerbation of idiopathic pulmonary fibrosis undergoing surgical lung biopsy. *Chest* 2005; 128: 3310–3315.
- 27 Kim DS, Park JH, Park BK, *et al.* Acute exacerbation of idiopathic pulmonary fibrosis: frequency and clinical features. *Eur Respir J* 2006; 27: 143–150.
- 28 Ambrosini V, Cancellieri A, Chilosi M, *et al.* Acute exacerbation of idiopathic pulmonary fibrosis: report of a series. *Eur Respir J* 2003; 22: 821–826.
- 29 Churg A, Müller NL, Silva IS, *et al.* Acute exacerbation (acute lung injury of unknown cause) in UIP and other forms of fibrotic interstitial pneumonias. *Am J Surg Pathol* 2007; 31: 277–284.
- 30 Akira M, Kozuka T, Yamamoto S, *et al.* Computed tomography findings in acute exacerbation of idiopathic pulmonary fibrosis. *Am J Respir Crit Care Med* 2008; 178: 372–378.
- 31 Hyzy R, Huang S, Myers J, *et al.* Acute exacerbation of idiopathic pulmonary fibrosis. *Chest* 2007; 132: 1652–1658.
- 32 Vannella KM, Moore BB. Viruses as co-factors for the initiation or exacerbation of lung fibrosis. *Fibrogenesis Tissue Repair* 2008; 1: 2.
- 33 Tomioka H, Sakurai T, Hashimoto K, *et al.* Acute exacerbation of idiopathic pulmonary fibrosis: role of *Chlamydomphila pneumonia* infection. *Respirology* 2007; 12: 700–706.
- 34 Konishi K, Gipson KF, Lindell KO, *et al.* Gene expression profiles of acute exacerbations of idiopathic pulmonary fibrosis. *Am J Respir Crit Care Med* 2009; 180: 167–175.
- 35 Selman M, Pardo A. Role of epithelial cells in idiopathic pulmonary fibrosis: from innocent targets to serial killers. *Proc Am Thorac Soc* 2006; 3: 364–372.
- 36 King TE Jr, Behr J, Brown KK, *et al.* BUILD-1: a randomized placebo-controlled trial of bosentan in idiopathic pulmonary fibrosis. *Am J Respir Crit Care Med* 2008; 177: 75–81.
- 37 King TE Jr, Albera C, Bradford WZ, *et al.* Effect of interferon  $\gamma$ -1b on survival in patients with idiopathic pulmonary fibrosis (INSPIRE): a multicentre, randomised, placebo-controlled trial. *Lancet* 2009; 374: 222–228.
- 38 Raghu G, Brown KK, Costabel U, *et al.* Treatment of idiopathic pulmonary fibrosis with etanercept: an exploratory, placebo-controlled trial. *Am J Respir Crit Care Med* 2008; 178: 948–955.
- 39 Demedts M, Behr J, Buhl R, *et al.* High-dose acetylcysteine in idiopathic pulmonary fibrosis. *N Engl J Med* 2005; 353: 2229–2242.
- 40 Jackson RM, Fell CD. Etanercept for idiopathic pulmonary fibrosis. Lessons on clinical trial design. *Am J Respir Crit Care Med* 2008; 178: 889–891.
- 41 Daniels CE, Lasky JA, Limper AH, *et al.* Imatinib treatment for idiopathic pulmonary fibrosis. Randomized placebo-controlled trial results. *Am J Respir Crit Care Med* 2010; 181: 604–610.
- 42 Varney VA, Parnell HM, Salisbury DT, *et al.* A double blind randomised placebo controlled pilot study of oral cotrimoxazole in advanced fibrotic lung disease. *Pulm Pharmacol Ther* 2008; 21: 178–187.
- 43 Nishiyama O, Kondoh Y, Kimura T, *et al.* Effects of pulmonary rehabilitation in patients with idiopathic pulmonary fibrosis. *Respirology* 2008; 13: 394–399.
- 44 Holland AE, Hill CJ, Conron M, *et al.* Short term improvement in exercise capacity and symptoms following exercise training in interstitial lung disease. *Thorax* 2008; 63: 549–554.
- 45 Spruit MA, Jansenn DJA, Franssen FME, *et al.* Rehabilitation and palliative care in lung fibrosis. *Respirology* 2009; 14: 781–787.
- 46 Noble P, Albera C, Bradford P, *et al.* The CAPACITY (CAP) trials: randomized, double-blind, placebo-controlled, phase III trials of pirfenidone (PFD) in patients with idiopathic pulmonary fibrosis (IPF). *Am J Respir Crit Care Med* 2009; 179: A1129.
- 47 Taniguchi H, Ebina M, Kondoh Y, *et al.* Pirfenidone in idiopathic pulmonary fibrosis a phase III clinical trial in Japan. *Eur Respir J* 2010; 35: 821–829.
- 48 Harari S, Caminati A. IPF: new insight on pathogenesis and treatment. *Allergy* 2010; [Epub ahead of print DOI: 10.1111/j.1398-9995.2009.02305.x].
- 49 Verma S, Slutsky AS. Idiopathic pulmonary fibrosis: new insights. *N Engl J Med* 2007; 356: 1370–1372.
- 50 Steele MP, Speer MC, Loyd JE, *et al.* Clinical and pathologic features of familial interstitial pneumonia. *Am J Respir Crit Care Med* 2005; 172: 1146–1152.

- 51 Armanios MY, Chen JJ, Cogan JD, *et al.* Telomerase mutations in families with idiopathic pulmonary fibrosis. *N Engl J Med* 2007; 356: 1317–1326.
- 52 King TE Jr, du Bois RM. Elucidating the causes and examining the latest clinical findings in pulmonary fibrosis. *Eur Respir Rev* 2008; 17: 105–107.
- 53 Loyd JE. Gene expression profiling: can we identify the right target genes? *Eur Respir Rev* 2008; 17: 163–167.
- 54 Cronkhite JT, Xing C, Raghu G, *et al.* Telomere shortening in familial and sporadic pulmonary fibrosis. *Am J Respir Crit Care Med* 2008; 178: 729–737.
- 55 Alder JK, Chen JJ, Lancaster L, *et al.* Short telomeres are a risk factor for idiopathic pulmonary fibrosis. *Proc Natl Acad Sci USA* 2008; 105: 13051–13056.
- 56 Raghu G, Weycker D, Edelsberg J, *et al.* Incidence and prevalence of idiopathic pulmonary fibrosis. *Am J Respir Crit Care Med* 2006; 174: 810–816.
- 57 Lama VN, Smith L, Badri L, *et al.* Evidence for tissue-resident mesenchymal stem cells in human adult lung from studies of transplanted allografts. *J Clin Invest* 2007; 117: 989–996.
- 58 Summer R, Fitzsimmons K, Dwyer D, *et al.* Isolation of an adult mouse lung mesenchymal progenitor cell population. *Am J Respir Cell Mol Biol* 2007; 37: 152–159.
- 59 Martin J, Helm K, Ruegg P, *et al.* Adult lung side population cells have mesenchymal stem cell potential. *Cytotherapy* 2008; 10: 140–151.
- 60 Driscoll B, Buckley S, Bui KC, *et al.* Telomerase in alveolar epithelial development and repair. *Am J Physiol Lung Cell Mol Physiol* 2000; 279: L1191–L1198.
- 61 Blasco MA. Telomere length, stem cells and aging. *Nat Chem Biol* 2007; 3: 640–649.
- 62 Samper E, Fernandez P, Eguia R, *et al.* Long-term repopulating ability of telomerase-deficient murine hematopoietic stem cells. *Blood* 2002; 99: 2767–2775.
- 63 Thannickal VJ, Loyd JE. Idiopathic pulmonary fibrosis. A disorder of lung regeneration? *Am J Respir Crit Care Med* 2008; 178: 663–665.
- 64 Korfei M, Ruppert C, Mahavadi P, *et al.* Epithelial endoplasmic reticulum stress and apoptosis in sporadic idiopathic pulmonary fibrosis. *Am J Respir Crit Care Med* 2008; 178: 838–846.
- 65 Willis BC, du Bois RM, Borok Z. Epithelial origin of myofibroblasts during fibrosis in the lung. *Proc Am Thorac Soc* 2006; 3: 377–382.
- 66 Bellini A, Mattoli S. The role of the fibrocyte, a bone marrow-derived mesenchymal progenitor, in reactive and reparative fibroses. *Lab Invest* 2007; 87: 858–870.
- 67 Moeller A, Gilpin SE, Ask K, *et al.* Circulating fibrocytes are an indicator for poor prognosis in idiopathic pulmonary fibrosis. *Am J Respir Crit Care Med* 2009; 179: 588–594.
- 68 Moore BB. Fibrocytes as potential biomarkers in idiopathic pulmonary fibrosis. *Am J Respir Crit Care Med* 2009; 179: 524–525.
- 69 Selman M, Pardo A, Kaminski N. Idiopathic pulmonary fibrosis: aberrant recapitulation of developmental programs? *PLoS Med* 2008; 5: e62.
- 70 Konigshoff M, Balsara N, Pfaff EM, *et al.* Functional Wnt signaling is increased in idiopathic pulmonary fibrosis. *PLoS One* 2008; 3: e2142.
- 71 Myllarniemi M, Lindholm P, Rynananen MJ, *et al.* Gremlin-mediated decrease in bone morphogenetic protein signaling promotes pulmonary fibrosis. *Am J Respir Crit Care Med* 2008; 177: 321–329.
- 72 Travis WD, Hunninghake G, King TE Jr, *et al.* Idiopathic non-specific interstitial pneumonia: report of an American Thoracic Society project. *Am J Respir Crit Care Med* 2008; 177: 1338–1347.
- 73 Kinder BW, Collard HR, Koth L, *et al.* Idiopathic nonspecific interstitial pneumonia: lung manifestation of undifferentiated connective tissue disease? *Am J Respir Crit Care Med* 2007; 176: 691–697.
- 74 Park IN, Jegal Y, Kim DS, *et al.* Clinical course and lung function change of idiopathic nonspecific interstitial pneumonia. *Eur Respir J* 2009; 33: 68–76.
- 75 Park JH, Kim DS, Park IN, *et al.* Prognosis of fibrotic interstitial pneumonia. Idiopathic versus collagen vascular disease-related subtypes. *Am J Respir Crit Care Med* 2007; 175: 705–711.
- 76 Lee HK, Kim DS, Yoo B, *et al.* Histopathologic pattern and clinical features of rheumatoid arthritis associated interstitial lung disease. *Chest* 2005; 127: 2019–2027.
- 77 Yoshinouchi T, Ohtsuki Y, Fujita J, *et al.* Nonspecific interstitial pneumonia pattern as pulmonary involvement of rheumatoid arthritis. *Rheumatol Int* 2005; 26: 121–125.
- 78 Kim EJ, Elicker BM, Maldonado F, *et al.* Usual interstitial pneumonia in rheumatoid arthritis-associated interstitial lung disease. *Eur Respir J* 2010; 35: 1322–1328.
- 79 Tashkin DP, Elashoff R, Clements PJ, *et al.* Effects of 1-year treatment with cyclophosphamide on outcomes at 2 years in scleroderma lung disease. *Am J Respir Crit Care Med* 2007; 176: 1026–1034.
- 80 Wells AU, Latsi P, McCune WJ. Daily cyclophosphamide for scleroderma: are patients with the most to gain underrepresented in this trial? *Am J Respir Crit Care Med* 2007; 176: 952–953.
- 81 Zamora AC, Wolters PJ, Collard HR, *et al.* Use of mycophenolate mofetil to treat scleroderma-associated interstitial lung disease. *Respir Med* 2008; 102: 150–155.
- 82 Gerbino AJ, Goss CH, Molitor JA. Effect of mycophenolate mofetil on pulmonary function in scleroderma-associated interstitial lung disease. *Chest* 2008; 133: 455–460.
- 83 Berezne A, Ranque B, Valeyre D, *et al.* Therapeutic strategy combining intravenous cyclophosphamide followed by oral azathioprine to treat worsening interstitial lung disease associated with systemic sclerosis: a retrospective multicenter open-label study. *J Rheumatol* 2008; 35: 1064–1072.
- 84 Goh NS, Veeraraghavan S, Desai SR, *et al.* Bronchoalveolar lavage cellular profiles in patients with systemic sclerosis-associated interstitial lung disease are not predictive of disease progression. *Arthritis Rheum* 2007; 56: 2005–2012.
- 85 Gilson M, Zerkak D, Wipff J, *et al.* Prognostic factors for lung function in systemic sclerosis: prospective study of 105 cases. *Eur Respir J* 2010; 35: 112–117.
- 86 Strange C, Bolster MB, Roth MD, *et al.* Bronchoalveolar lavage and response to cyclophosphamide in scleroderma interstitial lung disease. *Am J Respir Crit Care Med* 2008; 177: 91–98.
- 87 El-Zammar OA, Katzenstein AL. Pathological diagnosis of granulomatous lung disease: a review. *Histopathology* 2007; 50: 289–310.
- 88 Churg A, Muller NL, Flint J, *et al.* Chronic hypersensitivity pneumonitis. *Am J Surg Pathol* 2006; 30: 201–208.
- 89 Trahan S, Hanak V, Ryu JH, *et al.* Role of surgical lung biopsy in separating chronic hypersensitivity pneumonia from usual interstitial pneumonia/idiopathic pulmonary fibrosis. Analysis of 31 biopsies from 15 patients. *Chest* 2008; 134: 126–132.
- 90 Silva CI, Churg A, Muller NL. Hypersensitivity pneumonitis: spectrum of high-resolution CT and pathologic findings. *AJR Am J Roentgenol* 2007; 188: 334–344.
- 91 Hanak V, Golbin JM, Hartman TE, *et al.* High-resolution CT findings of parenchymal fibrosis correlate with prognosis in hypersensitivity pneumonitis. *Chest* 2008; 134: 133–138.
- 92 Silva CI, Muller NL, Lynch DA, *et al.* Chronic hypersensitivity pneumonitis: differentiation from idiopathic pulmonary fibrosis and nonspecific interstitial pneumonia by using thin section CT. *Radiology* 2008; 246: 288–297.
- 93 Olson AL, Huie TJ, Groshong SD, *et al.* Acute exacerbations of fibrotic hypersensitivity pneumonitis: a case series. *Chest* 2008; 134: 844–850.

- 94 Johnson SR, Tattersfield AE. Decline in lung function in lymphangioliomyomatosis: relation to menopause and progesterone treatment. *Am J Respir Crit Care Med* 1999; 160: 628–633.
- 95 Taveira-Dasilva AM, Stylianou MP, Hedin CJ, et al. Decline in lung function in patients with lymphangioliomyomatosis treated with or without progesterone. *Chest* 2004; 126: 1867–1874.
- 96 Harari S, Cassandro R, Chiodini J, et al. Effect of a gonadotrophin-releasing hormone analogue on lung function in lymphangioliomyomatosis. *Chest* 2008; 133: 448–454.
- 97 Lazor R, Valeyre D, Lacroinque J, et al. The Groupe d'Etudes et de Recherche sur les Maladies "Orphelines" Pulmonaires (GERM"O'P). Low initial KCO predicts rapid FEV1 decline in pulmonary lymphangioliomyomatosis. *Respir Med* 2004; 98: 536–541.
- 98 Taveira-DaSilva AM, Steagall WK, Rabel A, et al. Reversible airflow obstruction in lymphangioliomyomatosis. *Chest* 2009; 136: 1596–1603.
- 99 Goncharova EA, Goncharov DA, Spaits M, et al. Abnormal smooth muscle cell growth in lymphangioliomyomatosis (LAM): role for tumor suppressor TSC2. *Am J Respir Cell Mol Biol* 2006; 34: 561–572.
- 100 Juvet SC, McCormack FX, Kwiatkowski DJ, et al. Molecular pathogenesis of lymphangioliomyomatosis: lessons learned from orphans. *Am J Respir Cell Mol Biol* 2006; 38: 398–408.
- 101 Taveira-DaSilva AM, Moss J. Lymphangioliomyomatosis. *Cancer Control* 2006; 13: 276–285.
- 102 Krymskaya VP. Smooth muscle-like cells in pulmonary lymphangioliomyomatosis. *Proc Am Thorac Soc* 2008; 5: 119–126.
- 103 Yu J, Parkhytko AA, Henske EP. Mammalian target of rapamycin signaling and autophagy. Roles in lymphangioliomyomatosis therapy. *Proc Am Thorac Soc* 2010; 7: 48–53.
- 104 Bissler JJ, McCormack FX, Young LR, et al. Sirolimus for angiomyolipoma in tuberous sclerosis complex or lymphangioliomyomatosis. *N Engl J Med* 2008; 358: 140–151.
- 105 Davies DM, Johnson SR, Tattersfield AE, et al. Sirolimus therapy in tuberous sclerosis or sporadic lymphangioliomyomatosis. *N Engl J Med* 2008; 358: 200–203.
- 106 Moses MA, Harper J, Folkman J. Doxycycline treatment for lymphangioliomyomatosis with urinary monitoring for MMPs. *N Engl J Med* 2006; 354: 2621–2622.
- 107 Johnson SR, Cordier JF, Lazor R, et al. European Respiratory Society guidelines for the diagnosis and management of lymphangioliomyomatosis. ERS Task Force. *Eur Respir J* 2010; 35: 14–26.
- 108 Nurok M, Eslick I, Carvalho CR, et al. The international LAM registry: a component of an innovative web-based clinician, researcher, and patient-driven rare disease research platform. *Limphat Res Biol* 2010; 8: 81–87.
- 109 Cassandro R, Harari S. Pulmonary arterial hypertension secondary to chronic lung diseases: pathogenesis and medical treatment. *Sarcoidosis Vasc Diffuse Lung Dis* 2006; 23: 163–179.
- 110 Behr J, Ryu JH. Pulmonary hypertension in interstitial lung disease. *Eur Respir J* 2008; 31: 1357–1367.
- 111 Nathan SD. Pulmonary hypertension in interstitial lung disease. *Int J Clin Pract Suppl* 2008; 160: 21–28.
- 112 Nathan SD, Shlobin OA, Ahmad S, et al. Serial development of pulmonary hypertension in patients with idiopathic pulmonary fibrosis. *Respiration* 2008; 76: 288–294.
- 113 Hamada K, Nagai S, Tanaka S, et al. Significance of pulmonary arterial pressure and diffusion capacity of the lung as prognosticator in patients with idiopathic pulmonary fibrosis. *Chest* 2007; 131: 650–657.
- 114 Lettieri CJ, Nathan SD, Barnett SD, et al. Prevalence and outcomes of pulmonary arterial hypertension in advanced idiopathic pulmonary fibrosis. *Chest* 2006; 129: 746–752.
- 115 Nadrous HF, Pellikka PA, Krowka MJ, et al. Pulmonary hypertension in patients with idiopathic pulmonary fibrosis. *Chest* 2005; 128: 2393–2399.
- 116 Allanore Y, Borderie D, Avouac J, et al. High N-terminal pro-brain natriuretic peptide levels and low diffusing capacity for carbon monoxide as independent predictors of the occurrence of precapillary pulmonary arterial hypertension in patients with systemic sclerosis. *Arthritis Rheum* 2008; 58: 284–291.
- 117 Leuchte HH, Neurohr C, Baumgartner R, et al. Brain natriuretic peptide and exercise capacity in lung fibrosis and pulmonary hypertension. *Am J Respir Crit Care Med* 2004; 170: 360–365.
- 118 Whelan TP, Dunitz JM, Kelly RF, et al. Effect of preoperative pulmonary artery pressure on early survival after lung transplantation for idiopathic pulmonary fibrosis. *J Heart Lung Transplant* 2005; 24: 1269–1274.
- 119 Fell CD, Martinez FJ. The impact of pulmonary arterial hypertension on idiopathic pulmonary fibrosis. *Chest* 2007; 131: 641–643.
- 120 Nathan SD, Shlobin OA, Ahmad S, et al. Pulmonary hypertension and pulmonary function testing in idiopathic pulmonary fibrosis. *Chest* 2007; 131: 657–663.
- 121 Cottin V, Nunes H, Brillet PY, et al. Combined pulmonary fibrosis and emphysema: a distinct under-recognised entity. *Eur Respir J* 2005; 26: 586–593.
- 122 Cottin V, Fabien N, Khouatra C, et al. Anti-elastin autoantibodies are not present in combined pulmonary fibrosis and emphysema. *Eur Respir J* 2009; 33: 219–221.
- 123 Cottin V, Le Pavec J, Prévot G, et al. Pulmonary hypertension in patients with combined pulmonary fibrosis and emphysema syndrome. *Eur Respir J* 2010; 35: 105–111.
- 124 Mejia M, Carrillo G, Rojas-Serrano J, et al. Idiopathic pulmonary fibrosis and emphysema: decreased survival associated with severe pulmonary arterial hypertension. *Chest* 2009; 136: 10–15.